

INSIDE THE KINGDOM

January 31, 2018

the Chronicle

Section B – 16 Pages

In Barton

Biochar venture a new take on an ancient idea

by Elizabeth Trail

BARTON — A local trio hopes they've found a way to fight climate change, clean up Vermont's water, and create a business at the same time.

Richard and Donna Pion, and longtime friend Luke Persons, have teamed up to turn wood chips into a special type of charcoal called biochar. Their new company is called Green State Biochar.

Biochar is made by heating plant and animal wastes in a kiln with little or no oxygen, a process called pyrolysis.

As the materials heat, they blacken and crystallize, destroying most contaminants, and sealing the others, like heavy metals, into an inert form.

It's being touted as a major tool for fighting climate change. Because biochar effectively locks carbon away, biochar producers can potentially sell carbon offsets or trade on the carbon market.

Trees and plants pull carbon out of the air and lock it away in their tissues. And because animals eat plants, their bodies and their manure are also rich in carbon.

When plants and animals die, the carbon is released back into the air as they decompose.

The cycle is neutral, because carbon is taken up by a new generation of plants as they grow.

But getting rid of the extra carbon put into the air by burning fossil fuels is challenging. Biochar actually subtracts carbon from the total on the earth's balance sheet by locking it away in an inert form.

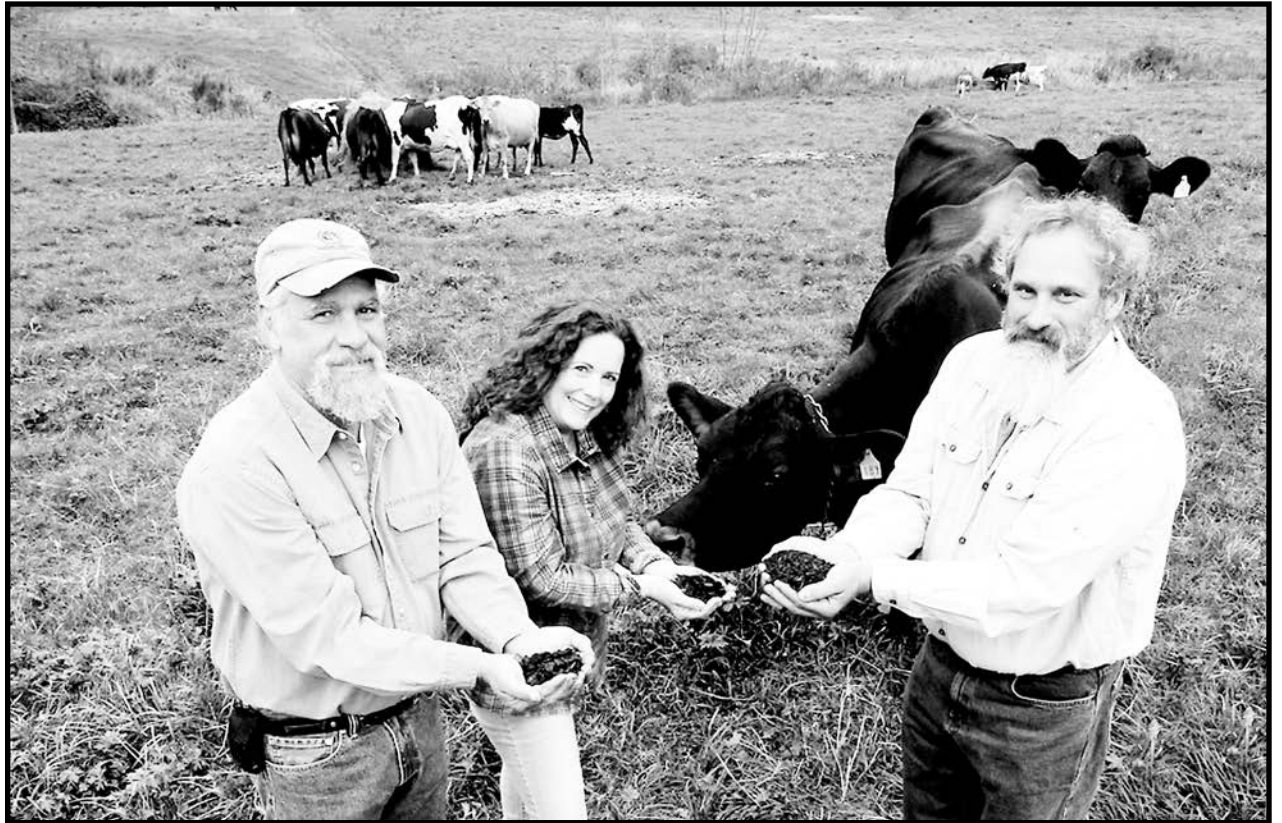
The finished biochar makes a fabulous soil conditioner. People in the Amazon basin made biochar in covered trenches and dug it into the earth for centuries to turn barren shallow rainforest soils into a deep rich loam called *terra preta*, or beautiful earth. Some of the *terra preta* is more than 500 years old.

In South America, entrepreneurs are digging up centuries-old *terra preta* and selling it to farmers and city dwellers for their gardens. In this country boxed or bagged modern biochar sells for as much as \$20 a gallon online.

There's also a lot of research to show that adding biochar to methane digesters, like the ones used in Vermont to turn dairy waste into electricity, greatly increases their efficiency.



Donna Pion, general manager of Green State Biochar, works from an office overlooking Crystal Lake in Barton. "I'm passionate about clean water," she said. Photo by Elizabeth Trail



Biochar filters have the potential to keep farm runoff out of lakes and streams. From left to right, Roger Pion, Donna Pion, and Luke Persons have started a business, Green State Biochar, to do just that. Photo courtesy of Donna Pion

And like other kinds of charcoal, biochar can be used to filter water.

That's what the trio of Barton entrepreneurs hopes to do.

"A couple of years ago, Roger and I were sitting around trying to come up with an idea for a new business," Ms. Pion said.

"We're passionate about lakes and streams, and we came up with an idea that would both fight climate change and help clean up our state's waterways."

Behind her, as she sits at the desk in her home office, is a view across Crystal Lake.

The couple's house is right on the water, showing a blank garage wall to Route 5, and stretching back to the shore.

Oversized glass windows frame a sweeping view of the frozen lake and the black icy cliffs on the other side.

Green State Biochar designs and sells systems that use biochar to filter anything from detergent-laden wash water used to clean milking equipment, to the runoff from manure pits.

"I'm passionate about clean water," Ms. Pion says.

Since a lot of farmers can't afford the cost of the filters, she spends her weekends writing grants that will help with the costs.

And she's been meeting with state officials to talk about using biochar filters to filter toxic blue-green algae out of lake water — or keep nutrients out of lakes in the first place.

"Biochar is still new to the people from the Agency of Agriculture," she said.

And that's on top of her day job with Vermont Natural Coatings.

Since Act 64, Vermont's clean water act, was passed, there's been a lot of interest in figuring out new ways to keep pollution out of the state's water.

And biochar offers a lot of possibilities.

For example, a trench can be dug along the edge of a field and filled with biochar, filtering

runoff water even before it gets to the now-required riparian buffer zone.

Or town road departments can add layers of biochar to roadside ditches or catch basins to catch the pollutants in road runoff.

"When it's collected all it can hold, they can just dig it up with machinery they already own, and put down new biochar," Ms. Pion said.

"And we send the old stuff back through the pyrolyzer."

The trapped manure or algae becomes part of the next batch of biochar, while the heat of the kiln destroys contaminants like chemicals, hormones, and drugs.

If chemicals aren't a concern, biochar laced with manure or other organic material can just be buried underground, deep enough that it won't be disturbed, but within reach of plant roots.

Elsewhere, it's being mixed with food waste and chicken litter to create a rich organic base for growing plant crops.

But a small new business needs to pick a single focus, and the Pions and their partner, Mr. Persons, have chosen to work on keeping runoff out of lakes and streams.

Pyrolysis, the process that turns plant and animal materials into biochar, isn't quite the same as burning. Because it happens without oxygen, it's closer to decomposition than combustion.

It's the same process used in wood gasification plants, which release the gases in wood and burn them at high temperatures to produce electricity. Burlington gets its power from a wood chip gasification plant.

And in Tennessee, there's a project that uses pyrolysis to generate power from landfill waste. It powers 400 homes, while reducing 20 tons of trash into a compact single ton of charcoal.

Locally, the Craftsbury Outdoor Center relies on two wood gasification boilers to heat its

(Continued on page 6B.)

Ruminations

Children did eat before Hot Pockets

by Tena Starr

A couple of weeks ago one of my (many) uncles died, which got me thinking about my father's family and the posse of cousins I've got out there somewhere, so many I can't count them, don't know all their names even, and about growing up with extended family in a different time from now.

I remember very well living at the grocery store — owned by memere and pepere — surrounded by aunts, uncles, cousins my age, cousins younger, aunts and uncles not far from our age — really big extended family in this case.

My other grandparents lived across the street, and I had cousins on that side of the family, too.

We didn't actually live at the store; we lived at an apartment on the other side of the parking lot. Then my father built a house across the street, beside my other grandparents, and we lived there briefly until he bought a farm that was walking distance from the village of Westfield if we walked through the field.

But in early days, the children of the older parents spent their time at the store because our parents worked there. How we spent those days would horrify many a parent today.

One of the uncles had set up a horseshoe ring outside the store, and at each post, as a result, there was a depression, which filled up with muddy water when it rained. I recall sitting in those muddy puddles, my cousin Sherie in the other one, fully clothed. She and I were closest in age, a couple of months apart. I bit her; she pulled out my hair. We loved each other.

Her brother Mike, for some reason, hit me in the face with a snow shovel one day. I have the scar on my top lip, which he cut straight through. My dad laid me out on the butcher table and butterflied it back together. He was a medic in the Korean War. A bonus because our family was not prone to going to the doctor. You had to be in pretty bad shape to resort to such an extreme measure as going to a doctor. A top lip sliced clean in two did not qualify as extreme.

I do not hold this against Mike, just remain puzzled about what possessed him to think it was a good idea to split my mouth open with a metal snow shovel that day. It's not like we'd had a fight. We didn't torment him nearly as much as we did our uncle Charlie, the youngest of the uncles, whose clothes we hid in the attic every day when he went to school.

Some of the older uncles were vicious (from the perspective of a niece who might have driven them crazy) to their nieces and nephews. Conrad, the uncle who recently died, was among the more benign. One day, about ten years ago when my son was little, we stopped at McDonald's, and there was uncle Conrad. Colton ran to him yelling, "grampa" because there was a strong resemblance. Conrad had no idea who that little boy was, but smiled and took it in stride anyhow.

I've heard a story about one of my younger aunts meandering around town and burying her underpants in a neighbor's lawn. We were a bit of a wild lot, and growing up in a town where you were related to half its occupants, no one worried much about what we were doing. Plus parents were busy.



This simple and tasty pizza is easy enough for most kids to handle on their own.

Photo by Tena Starr

Memere had 13 living children and worked in the store. She was rather a long way from being a helicopter mom. She would have been flat astounded by the attention people pay these days to taking their kids to lessons for this or that, or even to soccer practice.

I don't remember when I learned that soccer existed, but it wasn't when I was a kid.

Memere didn't talk much. I have no idea what she was ever thinking in her entire life. Part of that might have been language — she spoke English with a heavy French accent at best. I think it was also nature. She was a self-contained woman. We don't even really know exactly what her name was. Mostly she was called Marie, but it shows up in various places as some permutation of that. She didn't seem to care.

Despite the fact that "helicopter mom" and "soccer mom" were phrases that didn't exist then, and the whole concept would have been viewed as plain crazy, every one of her children grew up successful.

There was what would be considered now a stunning lack of supervision, but also the expectation that, at a certain age, a very young age, you'd work.

The next generation, mine, wasn't much better supervised. We, too, roamed and worked. Lots of us at Westfield school lived on farms, and you don't live on a farm without working. There's cows, and calves, to be fed, a barn to clean every day, hay to get in, cows to be milked. It's a livelihood, and everyone in the family participated.

And everyone learned how to cook.

Do children still learn how to cook these days? Or do they simply learn how to pop something frozen in the microwave?

I can hardly remember when I didn't know how to cook. At least something. I'm sure it

started with making cookies or sweets. It's a rare child who doesn't like cookies. I believe, however, that the reason I don't much like sweets as an adult is because of a chocolate cookie binge that made me sick. I can still remember the taste of those particular cookies. Not fondly. They had cereal in them. I don't much like cereal either.

My grandmother on my mother's side taught me how to make pie crust.

We cut up venison, big slabs of meat separated into packages by cut.

We cleaned fish, both perch and brook trout — the kitchen sink full of blood, guts, fins, and glassy eyes — and fried them up in cornmeal and flour. Not an image that would entice kids to take up fishing, I guess, though my son did, and we've had some marathon perch-cleaning sessions.

One of the very big differences is that, as teenagers, we made our own snacks and late night meals. Teens didn't have money, and there was no plethora of pizza places, as there is now. Which does not mean that pizza wasn't beloved. It just means that those Chef Boyardee store-bought pizza mixes were wildly popular.

And so was this — a quick, homemade, mini "pizza" I remember making countless times after coming home late from a night of snowmobiling.

Start with an English muffin or a piece of bread. Slice tomatoes thinly and put them on the bread. Sprinkle heavily with Mozzarella or Parmesan or both. Add anything else you want, like finely chopped vegetables, or pepperoni. Sprinkle oregano, and toast in a toaster oven, or real oven, until the cheese is melted and the bread is toasted. These days I'd say add a little minced garlic.

It's easy, quick, and tasty. And a lot cheaper than Pizza Hut.

Horse-drawn Sleigh Rides



For reservations call:
802-754-2396

Perry's Village Farm, Island Pond



**VERMONT
HERITAGE
Spring Water Co.**

WATER COOLER RENTALS • BOTTLED WATER • COFFEE
MACHINES & SUPPLIES • HOME & OFFICE DELIVERY

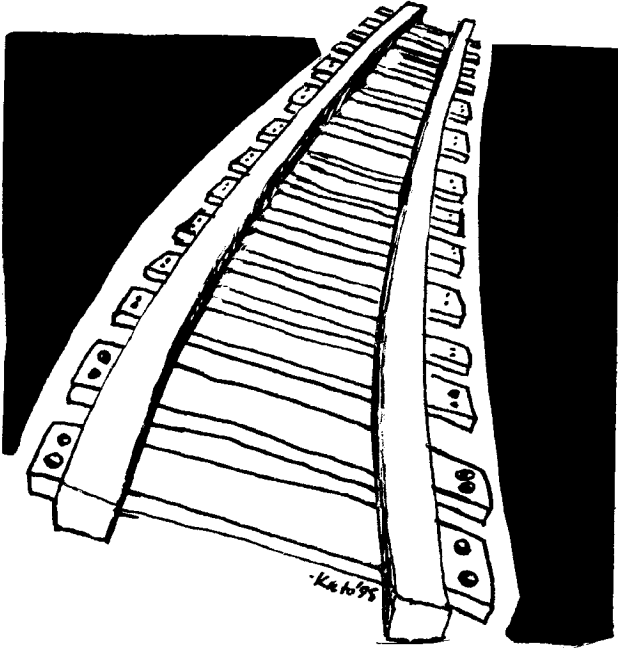
Water bottled at the source in Beebe Plain, Vermont.

NEWPORT, VERMONT 334-2528
TOLL-FREE 1-800-698-4792

sudoku solution

4	5	2	9	8	3	6	7	1
7	1	6	4	5	2	8	3	9
9	8	3	6	1	7	4	2	5
8	6	4	3	2	9	5	1	7
1	7	9	8	4	5	2	6	3
3	2	5	7	6	1	9	8	4
5	4	7	2	3	8	1	9	6
6	9	8	1	7	4	3	5	2
2	3	1	5	9	6	7	4	8

A Saturday in January



Yours from the Perimeter

by Paul Lefebvre

From the window in my new garage apartment, I watch a game warden drive by and continue up the road. I know he'll be back. It's a dead-end road that some people take to the trailhead of Bald Mountain. The morning snow is hard with a thick crust and I look for the dog I had let out earlier, hoping he wasn't the reason for the warden's drive-by.

March used to be the month when dogs were the greatest threat to deer. No longer. The deep snows that were once so characteristic of an Upper Kingdom winter can no longer be relied on by anyone anymore. Instead, January is becoming a month of rain and ice, leaving a hard crust of snow in the woods and fields that enables humans or beasts to walk wherever they please without sinking or breaking through the snow.

I have been up early, since first light, and am still feeling discombobulated from dividing my week between two places. I make coffee and watch the morning unfold. It offers few promises. Daylight only improves by going from one shade of gray to another, and the clouds that are piling up against the sky like beached whales threaten rain. I purposely avoid turning on the radio. Outside birds, mostly blue jays, fly in and out of the alders along the brook that has broken free of ice and is running up to its banks. After a stint of severely cold weather, we are experiencing an extended January thaw.

The temperature is warm for a Saturday morning in January, up to nearly forty degrees, but the day looks and sounds cold. A wind is coming out of the southwest, sometimes blowing hard enough to sound like a howling pack of coyotes on a ridge when the sky is clear. But nothing this morning is clear or moving. The snow is too hard to be disturbed by the wind; the air is too unpredictable to be trusted. My head hurts from too little sleep. Stillness hangs over the fields like a curtain. Only a scud of clouds as formless as a dream is moving.

Lately I have been watching the interplay between the winter sky and the frozen ground. It's likely a pastime brought on by a recent move I made from a house nestled in the woods to a garage apartment that sits between two fields divided by a road. But I suspect it's more than that.

Recently, as a part-time city dweller in Montpelier, I attended an opening for a woman artist, Claire Van Vliet, a down-the-road neighbor in Newark who makes paper and layers it with images of thick clouds rising over a marbled landscape, that sometimes look like fields freshly plowed. For some reason her work reminds me of winter, maybe it's the way she compresses the distance between earth and sky. She squeezes the space between the two in such a way as to make me feel I am standing at the divide separating heaven from earth.

In my mind's eye I know the hills and the sky she paints, but I don't know them the way she knows them. The Upper Kingdom is a geography

of hill towns; a rolling landscape where one is either looking at the bottom of a hill or its top. It's a landscape of unfolding diversity, where a sweeping view of mountaintops and ridgelines plunges into valleys and hollows, where mountain roads intersect briefly before scattering every which-way. What constitutes a junction for newcomers is fiercely regarded by Kingdom diehards as only a fork. The Upper Kingdom may be barren in the winter, but its geography is never dull.

By the time the game warden comes back down the hill, the dog is back inside the house. He is hard to ignore. I leave him Tuesday morning and don't see him again until Friday night. Now I'm back, he wants to play. Soon his ears droop as if I were keeping him prisoner. "Look," I tell him, "you can come with me in the truck when I leave."

He has a good life on the farm while I'm away. He has another dog to play with and Jason, my closest neighbor, sees that he is fed and in for the night. Still, the dog uses my weekly spurts of absence to guilt trip me. As a result, I usually leave earlier than planned. This morning is no exception.

Before going into Newark to check on the house, I drive up the hill, thinking I might discover what it was that brought the warden into our neighborhood. Instead, I encounter Sparky, whose acquaintance I made years ago when I was selling seafood out of the back of my pickup. He came with his sister for dinner one night, an innocent fresh out of Connecticut who couldn't imagine he would be eating lobster under

a gaslight in a cold water cabin.

On this morning, Sparky was shoveling dirt with a spade behind a man operating a backhoe. They were getting ready to bury a horse that had been in the family for years.

"She was 36 years old," he says, as we watch a man operating a backhoe dig the grave. "That's a long life for a horse."

I eat the leftovers from a calzone for lunch and take the long but scenic ride by Willoughby Lake to Newark. The lake is busy. Ice fishing shanties dot the north end, and further south across from Devil's Rock, a guy holding a hockey stick is skating on ice where pools of water can be seen close to shore. I have read ice needs to be two inches thick before you can safely walk on it. For me it would have to be twice as thick and then some before I would trust it.

At Newark the town plow has created a space for me to park the truck. There are no signs that anyone has been by, and I walk to the backdoor across the snow without fallen through. Against my better intentions, I stay longer than I planned. But who can leave a home on a Saturday, a home that temporarily has been put on hold, without rooting around for something that has been mislaid or forgotten in the rush to get away before the snows come?

I am late in leaving, but not late enough to forgo a detour into IP and a stop at the Legion to share a drink with BCW, whose truck is already there. On the way up the Mad Brook hill I see Rose is parked in my driveway. I'm late. I know. One too many stops, even for a Saturday.




The Notch

Playing Classic Rock Hits
1490 Newport 106.3 Littleton



Obituaries

Simon Joseph LaBounty

 Simon Joseph LaBounty, 96, of Barton, died on January 20, 2018.

He was born to the late Norbert and Juliette (Renault) LaBounty on May 15, 1921, in Barton. He attended school in Barton. On October 22, 1948, he married Rachel May Lanphear of Eden.

After he finished school he worked for a number of years at the Peerless Shoe Company, and a couple of mills, all in Barton, including one where he made chairs. He also talked fondly of working at the Civilian Conservation Corps camp in the late 1930s, which he said prepared him for when he joined the army.

In 1942 he joined the army. Because of his athleticism he was assigned as a calisthenics/obstacle instructor at many of the bases in

the U.S. during World War II. In 1945 he was honorably discharged with the rank of corporal. After the war he went to Kingston, New York, and worked doing odd jobs with his brothers Pete and Maurice.

He came back to Barton and married then Ms. Lanphear, and went on to get his master plumbers, electrical, and tinsmith license. He worked for Ernest Miller Plumbers in Barton for many years until his retirement. Mr. LaBounty was an avid golfer and was a member at Orleans Country Club for many years, and played on many courses throughout the state. Not only was he an avid golfer, he and Mrs. LaBounty also managed Orleans Country Club for many years.

Besides golf, in his earlier years he loved to fish and hunt and had many fond memories of his brothers

going to hunting camp in Eden. He also enjoyed playing cards throughout his life, especially when attending senior meals in Barton and Orleans.

Mr. LaBounty belonged to the American Legion for over 50 years and belonged to the Knights of Columbus Council #7763 in Orleans.

He is survived by his son Lynn "Butch" LaBounty of Newport; his granddaughter Torie Bingham of Newport; a very special companion Marion "Midge" Hunt of Barton; and many nieces and nephews.

He was predeceased by many brothers and sisters: Ludolph "Doc" LaBounty, Rudolph "Rudy" LaBounty, Adolph "Pete" LaBounty, Yvonne Slicer, Aldea O'Keefe, Bruno LaBounty, Maurice LaBounty, Simonne Hayes, Victor LaBounty, Irene Garafolo, and



Robert "Jake" LaBounty.

A Mass will be celebrated in the spring. Online condolences can be shared at curtis-britch.com.

Diana E. Willey Beaton

Diana E. Willey Beaton, 67, of Newport, died on January 13, 2018, after a long battle with cancer.

She was born on March 24, 1950, to the late Milton and Dorothy Willey.

Mrs. Beaton was active with her church friends, and spent time working with flowers around her home. She enjoyed going for long walks throughout the neighborhood.

She is survived by her son Robin K. Beaton and his wife, Tammy, and their daughters: Autumn and Shaylyn, all of Irasburg.

She is also survived by her sisters: June Lussier and her companion, Howard, of Irasburg, and Sharon McDonald of Massachusetts.

She was predeceased by her siblings: Rodney, Kenneth, Betty, Jeannette, and Norma; and her long-time companion, Ron Pepin.

At her request, there will be no services.

Should friends desire,



contributions in her memory may be made to the Mary E. Wright HALO Foundation, 1073 Upper Quarry Road, Newport, Vermont 05855.

Karl E. Cloney

Karl E. Cloney, 57, of Newport, died on January 23, 2018, in Boston, Massachusetts.

He was born on August 2, 1960, in Waterbury, Connecticut, to Vaughn and Sandra (Levasseur) Cloney.

Mr. Cloney was a funny, outgoing man who loved to spend time with his family and friends. Family always came first. He enjoyed fishing, playing chess and cribbage, reading the Bible, and watching conspiracy videos. His favorite thing to do was spend time with his granddaughter Trinity.

He is survived by his children: Karl Cloney Jr., Thomas Cloney, and Mathew Cloney, all of Newport; by his grandchildren: Tristan, Trinity, Teeghan, and Chelsea Cloney and Kallyanna.

He is also survived by his siblings: John Cloney of North Carolina, Fran Russo of Connecticut, Sara Clark of Florida, and Lisa Cheney of California; and by numerous nieces and nephews.



Funeral services will be held at 2 p.m., on Saturday, February 3, at the Curtis-Britch-Converse-Rushford Funeral Home, located at 4670 Darling Hill Road in Newport. Friends may call at the funeral home from 1 p.m. on Saturday until the hour of the funeral.

Online condolences can be shared at curtis-britch.com.

 5025 U.S. Route 5
Newport, VT 05855
Like us on Facebook
www.AllAboutHomeVT.com

 **HERITAGE**
MEMORIALS

INCORPORATED
Scott & Lori Bianchi, Owners

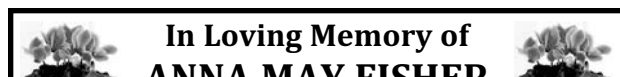
802-334-2314

- Monuments
- Lettering
- Cleaning
- Restoration
- Granite Benches
- Cremation Memorials
- Granite & Quartz Countertops

Need Granite? Call us!

515 Union St., Newport, VT
Hours: Mon.-Fri. 9-5.
Any time by appointment.

 **Adriens**
auto center
SNOW TIRES!
UNDERCOATING:
Cars \$100
Trucks \$125
• LOCKOUTS
• LUBE OIL
• BRAKES
• EXHAUST
• BATTERIES
• PICK-UP
• DELIVERY
319 Main St., Newport, VT • (802) 334-7790

 **In Loving Memory of**
ANNA MAY FISHER
October 28, 1925 ~ February 5, 2008
*It's been 10 years since you left,
we are still missing you, but think
of you with happy memories.*
Children: Christine & Robert, Rocky & Tom,
Chuck & Jane, Darlene & Ronald, Mavene &
Steve, and Norene & Steve.
Grandchildren: Carrie, Cory, Amanda,
Patricia, Travis, Grady, Jason, Eli, & Hannah.
Great grandchildren: Logan, Sydney,
Christine-Rae, Peyton, and Ryker.

Advanced Hearing Technologies
Prouty Miller Building, 1734 Crawford Rd., Newport, VT • 802-985-9516
22 YEARS HELPING THE VERMONT COMMUNITY HEAR BETTER!
Today's technology now enables us to provide testing/service/repairs to the homebound and senior centers as well as in the office!
Try a hearing aid FREE for 3 weeks!
Call 802-985-9516 for details.
Come in as a customer, leave as a friend!
Let us help you find a unique, innovative hearing solution to fit your lifestyle and budget.

 **BIANCHI MEMORIALS**
• MONUMENTS • LETTERING • CLEANING • REPAIRS
• LANDSCAPE PRODUCTS • GRANITE COUNTERTOPS
BIANCHI MEMORIALS cares about our customers and it shows in every granite monument and countertop we create. We take customer satisfaction and quality seriously. Come in and visit our display in DERBY and experience firsthand the attention to detail and care that goes into every design.
(PHONE) 802.766.9254 3212 US ROUTE 5
(TOLL FREE) 844.305.0121 DERBY, VERMONT 05829
www.bianchimemorials.com • Rudy & Linda Bianchi, Owners

Obituaries

Bernard E. Urie

Bernard E. Urie, 96, of West Glover, died on January 17, 2018.

He was born in Andersonville on January 5, 1922, the son of Ernest and Mary Comer Urie.

On December 29, 1945 he married Elaine Louise Alexander, who predeceased him on March 17, 2015, having been married almost 70 years.

Surviving him are his five children: Kathy and her friend, Zane, of Manchester, New Hampshire, Elizabeth Bomberger and her husband, Glenn, of Hinesburg, Philip and his wife, Frances, of Tunkhannock, Pennsylvania, Stuart and his wife, Darlene, of Tampa, Florida, and Michael and his wife, Claudia, of Wichita, Kansas; his grandchildren: Allyson Wind and her husband, Kyle, of Dickson City, Pennsylvania, Nathanael Urie of Lincoln, Nebraska, Calvin Urie of Tunkhannock, Annalise Bomberger of Hinesburg, and Barbara and Ana Sophia Urie of Wichita. Also surviving him is his sister Beverly Grant of Barre; his sisters-in-law: Pearl Urie of West Glover, Ellen Urie

of Barton, and Martha Alexander of Glover; his brothers-in-law: Donald King, of West Glover and Richard Jacobson of South Burlington; and many nieces and nephews.

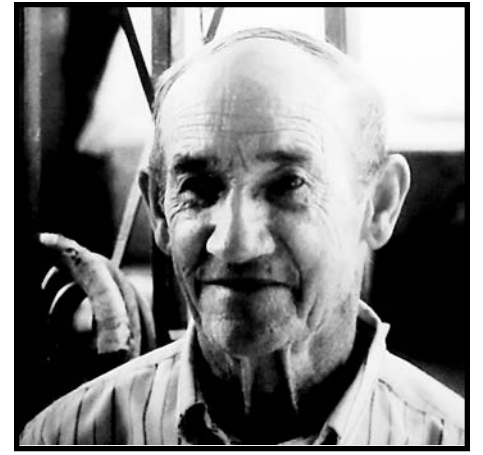
He was predeceased by his three brothers: Howard of Long Island, New York, and Edwin and John of West Glover; and his sisters Mary Ellen Knapp of Somerville, New Jersey, and Harriet King of West Glover.

Mr. Urie served as a Glover Selectman and overseer of the poor, and on the UCC Parish Council. He drove trucks for his father, helping to install the first electric poles in Orleans County and build the Kancamagus Highway in New Hampshire. He ran his own trucking business after getting married, hauling logs and sawdust and then plowing snow for the town of Glover and hauling milk in cans.

As youngsters his older children went with him on the "milk fruit" (route) picking up milk at farms on the way to Findysen's Creamery in Lyndonville. He always said only Rene Perron handled more milk cans than he did. He drove can and bulk

milk trucks for Buttrick's Creamery in East Montpelier throughout the 1960s. He also hauled milk into the Kraft plant in South Troy for Earl LaClair of South Barton, whom he had great respect for.

While picking up milk at Val LeBlanc's farm in Barton, Mr. Urie was offered a calf sired by Arlinda Chief for \$50. Ida, nick-named "Charlie Brown" by his sons Stuart and Michael, was the foundation for a tremendous cow family. He loved his registered Holsteins and bred many "mortgage-lifters." Of his best cows he would smile and say: "Quality, quality, quality." Bernard also worked for more than a dozen farmers in Barton and Glover, including David Owen, Bud LeClerec, and Bill Tester, sugaring, haying, working in the woods, and trimming Christmas trees. He also enjoyed working for Nelson Stevens as his "mud man" building chimneys, including two for himself. He especially enjoyed working for Alden Borland, saying, "He taught me how to really work." He designed and built several model barns and also bucking bronco



horses like his grandfather John had made, and stilts and walking birds for his grandchildren and others. Mr. Urie loved his family.

This kind man is terribly missed. He would want everyone to believe in the Savior and to know he is in heaven, awaiting our arrivals, as his Bible taught him.

A funeral for Mr. Urie will be held in Barton in the spring, as will be his interment in Andersonville. Donations in his honor may be made to the Glover Historical Society.

Online condolences may be shared at www.curtis-britch.com.

Sis (Evelyn) Broome

Sis (Evelyn) Broome, 92, of Newport, died on January 25, 2018, in Newport.

She was born on September 19, 1925, in Stebenville, Ohio, to Mark and Viola (Robertson) Whitlock. On December 31, 1951, she married Thomas R. Broome Jr. who predeceased her in 1990.

She graduated from Oakdale High School in Oakdale, Pennsylvania. She retired in 1988 from J.J. Newberry Store in Newport where she worked at the lunch counter. Her employment began there in 1973.

She was a member of the VFW Auxiliary Post #798 of Newport and the Charleston Historical Society. Among her many hobbies, she enjoyed writing, traveling, sewing, bowling, and listening to music.

She was very active with the Newport Baptist Church and also sang in their choir.

Funeral services will be held at 11 a.m. on Friday, February 2, at the Curtis-Britch-Converse-Rushford Funeral Home, located at 37 Lake Road in Newport, with the Reverend David Lisner officiating. Friends may call at the funeral home from 10 a.m. on Friday until the hour of the funeral. Spring interment will be in West Village Cemetery in West Charleston.

Should friends desire, contributions in her memory may be made to the Newport Baptist Church, 306 East Main Street, Newport, Vermont 05855.

Online condolences can be shared at curtis-britch.com.

Norma Leland Hackett

Norma Leland Hackett, 83, died peacefully on January 22, 2018.

Mrs. Hackett was born on July 8, 1934. She married Carl Hackett, in Derby, on May 5, 1951, and they enjoyed 67 years together. They owned the Red Wing Dance Hall, Hackett's Plumbing and Heating, and many rental properties including Hackett's Trailer Park and the former Derby State Police building.

She loved her role as Mr. Hackett's helper, making sure his needs were met. She helped him on many of his projects, passing him tools or holding the light for him. She busied herself with cooking and cleaning and taking care of others especially her three children. Lately, she enjoyed puzzles, painting, and coloring. Mr. and Mrs. Hackett shared many miles on snowmobiles and traveling in an RV with friends. Rumor has it she was excellent on roller skates and the dance floor. Her love and dedication to her family will be missed tremendously.

She is survived by her beloved husband, Carl Hackett; her sister Tillie Pierce of Medway, Massachusetts; her daughters: Debra Partridge and her husband, Bob, of Derby, Shirley Hackett and her partner, Dan Souliere, of Derby; and her son Earl Hackett and his wife, Karen, of Derby. She also leaves behind a number of grandchildren and great-grandchildren: Leah Partridge of



McLean, Virginia; Toby and Colleen Partridge and their children: Maria and Avery, of Chippewa, Pennsylvania, Katelyn and Aaron Elzinga and their children: Mia and Kade of Grand Rapids, Michigan, Ben and Michelle Partridge and their daughter Polly of Derby, Daniel and Meagan Van Woert of Fairfield, Andrea Van Woert and her partner and her daughter Addison of Derby, and Carl Hackett of Willow Spring, North Carolina.

She is predeceased by her brother Wayne Leland and his wife, Fern, of Stuart, Florida.

A service was held on January 28 at the Curtis-Britch-Converse Rushford Funeral Home in Newport.

In lieu of flowers, please consider making contributions to The Orleans Essex VNA and Hospice, 46 Lakemont Road, Newport, Vermont 05855.

Online condolences can be shared at curtis-britch.com.

Eloise Kay (Powers) Vittum

Eloise Kay (Powers) Vittum, 67, died peacefully on January 11, 2018, at Applewood Rehabilitation Center in Winchester, New Hampshire, where she has been a lovingly and well cared for resident for the past three years.

Although she was ready to move on from this life, there are many who will miss her. Her six adult children, 16 grandchildren, and two great-granddaughters were represented at the beautiful celebration of life service that was

conducted on January 21 at Grace Christian Fellowship in Winchester by Pastor Matthew Worrall. Her brother Robert Powers; and two sisters: Nanette (Powers) Bonneau and Ethel (Powers) Chase are among those who will miss her generosity of spirit.

A graveside service at the Mountain View Cemetery in Lowell will be held at the convenience of the family at a later date.

Online condolences may be shared at www.curtis-britch.com.

Don't forget...
the Chronicle
 has a drop-off basket
 for announcements, payments, letters to the editor, etc., at THE FRONT DESK on East Main Street in Newport.

Hyperbaric Oxygen Therapy
 Enhance the body's natural ability to heal.
 CommunityHyperbaric.com
 East Hardwick • 472-8900
 Montpelier • 613-3929

Orleans One Stop
 Redeem your Price Chopper AdvantEdge points here!
SUNOCO
 Main St., Orleans 754-6568
 Fuel AdvantEdge

Already, expansion is on the horizon

(Continued from page 1B.)

central buildings. They're about four times more efficient than ordinary wood stoves or furnaces.

Pyrolysis can neutralize hormones, drugs, and organic compounds — even toxic ones, like the polychlorinated biphenyls (PCBs) that nearly destroyed a Michigan dairy community 30 years ago after fire retardant was accidentally mixed into cattle feed.

Even heavy metals can be sealed for centuries inside the charcoal.

The Pions' homemade kiln doesn't make electricity like commercial models.

"That's our goal with our next kiln," Ms. Pion said.

But the company already uses the extra heat the kiln produces to dry the chips before they get to the pyrolizer.

The pyrolizer itself takes almost no energy to run. Once the fire gets going, it feeds on itself.

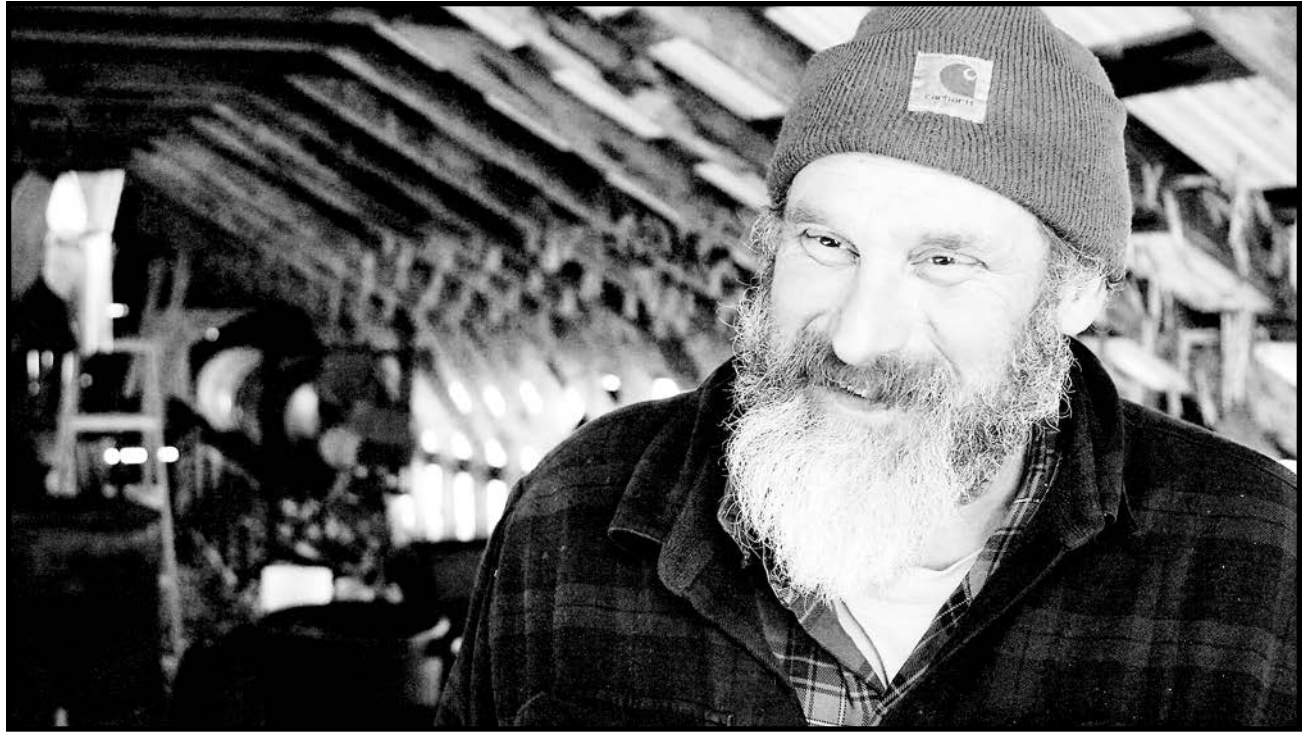
The homemade kiln, located on a property in Greensboro, is about half the size of her home office, Ms. Pion said, perhaps ten by twelve feet.

It's the product of a lot of experimentation by Mr. Persons using salvaged materials, and a combination of advice from places like Cornell and Texas A&M that are developing biochar projects, and do-it-yourself knowhow gleaned off the internet.

"Luke can fix or build anything," Ms. Pion said.

The result is a workable pyrolizer that can kick out about 300 pounds of biochar a day.

"We could put on a second shift and make 600 pounds a day," Ms. Pion said.



It took Luke Persons about a year to design and build Green State Biochar's homemade pyrolizer, or kiln, that turns local wood waste into biochar. The equipment is set up in a barn in Greensboro.

Photo courtesy of Donna Pion

She compares that to state of the art pyrolizers that can produce as much as a ton of biochar per hour and cost a \$1-million or more.

"They can spread out over several acres," she said.

Green State Biochar isn't quite that ambitious.

But a new pyrolizer is definitely in the works. "We're right on the cusp of expanding," Ms. Pion said. "We have investors, we're just waiting for the right time."

She has visions of opening a stump and scrap lumber dump at the new site. Contractors and other businesses would pay to get rid of the very materials that would be turned into biochar.

"One of our goals is to create good-paying jobs for people in the area," she said. "So we have to figure out innovative ways to increase the revenue stream."

The company will also be buying sustainably harvested local wood that isn't suited for lumber.

Worldwide, there's a huge amount of interest in biochar, Ms. Pion said.

"It's huge," she said. "How could I not have heard of this?"

But the tide is turning.

"I really believe that in five or six years, nobody will be asking what's biochar," she said.

contact Elizabeth Trail at elizabeth@bartonchronicle.com

We Buy Houses!
 ANY CONDITION - REFERRAL FEES PAID
Tanguay HOMES Inc. 334-6665
 Cash Now - No Commissions
 We close at your convenience
 Quick service available
 Transfers - Estates - Foreclosures
 What can we do for you?
www.tanguayhomes.com

Real Estate

JIM CAMPBELL REAL ESTATE
 601 East Main Street
 Newport, VT 05855
 Days: 334-3400

Jim Campbell, Principal Broker
 Residence: (802) 334-2321 • Cell: (802) 999-7781

Kerry Wevurski, Broker/Realtor
 Residence: (802) 334-5491 • Cell: (802) 673-6656

Ryan Pronto, Broker/Realtor & Commercial Rentals
 Cell: (802) 274-9149

Craig Crawford, Realtor/Rental Manager
 Cell: (802) 249-5200

Jaime Lague, Realtor • Cell: (802) 323-9990

Nicky Patenaude, Realtor • Cell: (802) 274-8198

Mark English, Broker at Jay
 Office: (802) 988-4000 • Cell: (802) 323-9908

Contact us on the net! Our location is www.jimcampbellrealestate.com



JCR 5435 ~ Newport: Completely remodeled 3 BR, 1 BA ranch on .29 acres. Spacious yard, single story living & walking distance to NCUHS, hospital & bike path. MLS 4673836. **\$119,500.**



JCR J-164 ~ Jay: Looking for that perfect property near Jay Peak Resort? Check out this well-appointed 3 BR, 4 BA Trillium Woods Townhouse that's "move-in" ready!! MLS 4655860. **\$219,000.**



JCR 4871 ~ Newport Center: All updated, lakefront home. 5 BR, 150' of frontage on Lake Memphremagog, barn/garage with 2nd floor & 20 minutes to Jay Peak Resort. MLS 4650489. **\$479,000.**



JCR 5290 ~ Newport: Well-maintained, turnkey home in desirable location. Close to schools, hospital & parks. Fenced-in yard, deck with awning & more. MLS 4620677. **\$129,900.**

Remember Us For Commercial, Residential & Vacation Rental Properties.



Online Subscriptions are only **\$28** per year.
www.bartonchronicle.com

COVERED BRIDGE
 PROFESSIONAL HOME INSPECTIONS, LLC
 Serving the central and northern areas of VT & NH.

Barry Sykes Licensed in VT & NH
 Toll-free 1-866-388-2692
 VT (802) 715-2010

www.cbphi.com

ASHI MEMBER

SANVILLE REAL ESTATE
 RESIDENTIAL-LAND-COMMERCIAL
 1792 Route 58W - Irasburg, VT 05845
 802-673-6396

Jeffharpervt@gmail.com
www.sanvilleRealEstate.com

Jeff Harper
 Sales Associate

SANVILLE REAL ESTATE
 RESIDENTIAL-LAND-COMMERCIAL
 1792 Route 58W - Irasburg, VT 05845

802-754-8457 HOME
 802-673-8102 CELL
sanville.cindy@gmail.com

www.SanvilleRealEstate.com

"Ask us about our VAST trail properties."

UVM to host ag career day

All high school and college students interested in exploring career opportunities in agribusiness and other ag industries are invited to attend Agriculture Career Day on Saturday, February 10, in Burlington.

University of Vermont (UVM) Extension 4-H and the Animal and Veterinary Sciences Department will sponsor the free event at the Dudley H. Davis Center on the UVM campus from 9 a.m. to noon. The program includes welcome remarks by Chuck Ross, UVM Extension director, followed by career presentation lightning rounds and roundtable in-depth

conversations with participating businesses and organizations.

Representatives from feed companies, food manufacturing, dairy and equine farm management, agronomy, ag internships, youth farm education, and allied industries will speak to the group. Many of the presenters are UVM graduates or affiliates.

To register, or if requiring a disability-related accommodation to participate, please contact Wendy Sorrell, UVM 4-H livestock educator, at (802) 651-8343, extension 513; or wendy.sorrell@uvm.edu by February 1. — from UVM Extension.

Local SkillsUSA chapter helps the HALO Foundation

The North Country Career Center SkillsUSA chapter donated \$210 to the HALO Foundation on January 16. The money was raised from the clothing drop and swap held in November 2017 at the Elk's Club in Derby.

The HALO Foundation is a program to financially aid people with cancer within Orleans County. Chelsea Bohanon accepted the

money on behalf of the foundation. She explained to the SkillsUSA members that the foundation was started in 2011 by a group of four brothers after their mother, Mary Ellen Wright, died of cancer. It has assisted several families since its inception. Ms. Bohanon expressed gratitude for the donation. — submitted by Allison Gray, SkillsUSA reporter.

REAL ESTATE & AUCTIONS

DEGRE AUCTION SERVICE
"Our goal is a satisfied customer."
 • ESTATES • COLLECTIBLES • ANTIQUES
 • Real Estate & Personal Property • Licensed Auctioneer • Free Consulting
 We will buy one piece to an entire estate or commission us to sell your personal property!
LICENSED AUCTIONEER: RICHARD DEGRE
 (802) 744-2427 • degreauction@comcast.net
Specializing in on-site auctions!

BIG BEAR REAL ESTATE
 Route 100, Troy, VT 05868 • 744-6844 • Fax: 744-6659 • 1-800-479-6844
 • Tina Leblond, Principal Broker, 598-1458 • Sharon Faust, Realtor, 274-2072
 • Larry Faust, Realtor, 274-0921 • Joanne Guyette-Worth, Realtor, 673-8676
 Michelle McManus, Realtor, 673-4487
 Check us out on the Internet at www.bigbearrevt.com
 Put the Power of the Big Bear Team to Work for You!
 

Century 21
FARM & FOREST www.FarmAndForest.com
Derby Office 5043 U.S. Rte. 5, Derby Rd., P.O. Box 331, Derby, VT 05829-0331, 800-273-5371/802-334-1200
Burke Office 234 VT Rte. 114, P.O. Box 400, East Burke, VT 05832, 802-626-4222, Fax: 802-626-1171
 Info@FarmAndForest.com

Your Dreams Are Our Job!



BURKE MTN.
 Remodeled townhouse adjacent to lifts, 2 BR/2 BA, heated mudroom, lovely kitchen, ski locker on deck.
\$229,000.
 Jack. #4673792



WESTFIELD
 Gentleman's farm on 34A, pond, 52 stall barn, gracious 4 BR/2 BA home, office, attached garage.
\$325,000.
 Bruno. #4673896



LYNDONVILLE
 Prime commercial site on Route 5, level lot, ample parking, 2002 building w/5 offices, 2 baths.
\$150,000.
 Connie. #4660788



BURKE MTN.
 Ski & bike from the door! All new tile & hardwood floors, 3 BR/2 BA, mudroom, porch, affordable!!
\$299,000.
 Andrea. #4674187



NEWPORT
 Nice neighborhood near schools, easy-care 3 BR/2 BA, paved drive, new metal roof, central air, great price!
\$149,900.
 Bruno. #4660942



CHARLESTON
 Seasonal getaway or live in while building NEW! 12.4A, apple trees, well, septic, u/g power, views.
NOW \$59,900.
 Micheline. #4646565

CHARLESTON – 17.6A, on VAST trail, good site for getaway cabin in woods. **\$42,000.**
 John. #4673777

BARTON – 13.15A house lot, shared road, VIEWS, good soils, near town yet quiet. **\$39,500.**
 Dan. #4502773

NEWPORT TOWN – 44.92A, possible maple orchard, great recreational area. **\$69,900.**
 Dan. #4654702

NEWPORT TOWN – 10.27A w/driveway, septic & leach field, mixed woods. **\$29,000.**
 Micheline. #4609357

Need more info? Stop by our offices in Derby and East Burke, or visit online at FarmAndForest.com. Not ready to buy? Click on our **Rentals** tab to see what we have available throughout the Northeast Kingdom.



Real Estate & Insurance
 179 Main Street, Derby, VT 05829
 mick@realestateVermont.com
 www.realestateVermont.com
 766-2401 • 766-2656 • 800-243-2401

JUST LISTED!

Coventry Colonial/contemporary home with 3 bedrooms on the second floor with 2 baths. including master suite with walk-in closet and great master bath with huge shower. First floor includes an eat-in kitchen/den, formal dining room/living room with cathedral ceiling, front hall, and half bath. Lower daylight basement level has a family room, full bath, and double office. Spectacular private, large, deep pond with guest cabin.

\$359,000.



ANR offers tips to help stretch the woodpile

Following the two-week arctic blast from late December into early January, the 38 percent of Vermonters who heat in full or in part with wood may be looking with dismay at their dwindling woodpiles. The unseasonably cold and persistent sub-zero temperatures put early significant dents in woodpiles, with months of heating left to go.

It can be nearly impossible to track down dry or seasoned wood this time of year, so what is a homeowner to do if they're reluctant to fall back on their oil or propane backup? Here is a collection of suggestions to help stretch what's left of the woodpile through spring.

Consider replacing old, inefficient woodstoves with a new, efficient model. New EPA certified stoves can be up to 70 percent more efficient than older versions. Not only do they use less wood to heat homes, they will also improve indoor and outdoor air quality. Not sure if a stove is EPA certified? If it's pre-1990 it's worth looking up the model and serial number. A local stove dealer can help.

Also, consider switching to a pellet stove. Pellet stoves look and function much like woodstoves, but burn wood pellets instead of cordwood. Pellets are readily available in bag

and in bulk and are ready to burn when you get them.

Consider purchasing a cord or two of kiln dried wood. While most firewood is dried outdoors for six to 12 months, kiln dried wood is dried in just two days and thus continually available throughout the season. It is dried much more thoroughly and evenly than outdoor drying can achieve. Kiln dried wood can also be heat treated, making it bug free and safe to store indoors. It is more expensive than wood dried outside, but it can be well worth the investment.

Residents should plug up drafts around their home. It's not too late to consider making basic efficiency improvements around the home such as caulking, insulating outlets, investing in heavy curtains, and sealing drafty windows with plastic sheeting. The same tactics used to keep oil and propane bills down can be used to help stretch wood fuel, too. Visit www.buttonupvermont.org and www.encyclopedia.com for ideas.

Low income Vermonters can apply for assistance. Cordwood and wood pellets are both eligible fuels in the Vermont Low Income Heating Assistance Program (LIHEAP). For more information on how to apply, contact the

Department of Children and Families Benefit Center at (800) 479-6151, or visit www.dcf.vermont.gov/benefits/fuel-assistance.

Do not burn green wood. It may be tempting as dry woodpiles start to dwindle, but never burn green wood in a stove or fireplace. Green wood burns less efficiently. Energy is wasted evaporating moisture out of the green wood before it can combust. That same piece of firewood will give more bang for the buck if it is kept until next year.

Green wood also puts homes at risk for a chimney fire. Green wood produces creosote, which can line a chimney and catch fire.

Finally, green wood is bad for both indoor and outdoor air quality. The smoldering fire produced by green wood produces excessive amounts of particulate matter, which is harmful to health. To learn more, visit www.healthvermont.gov/environment/climate/winter-weather.

Most importantly, make sure to keep homes at a temperature warm enough for the health of a home and its occupants — even if that means turning up the thermostat on the furnace. — from the Agency of Natural Resources.

Building Trades

SPECIALIZING IN REMODELING, ADDITIONS & FINISH WORK

VANASSE BUILDERS Inc.

- Custom Built Homes
- Standing Seam Steel Roofing
- Vinyl Siding

FULLY INSURED
37 Years of Experience!



HARVEY AUTHORIZED DEALER.



Dan Vanasse • 525-3878
Jon Vanasse • 754-9489

Classic Vinyl, Insulating & Replacement Windows

Jody Jonyaw

Home Repair & Remodeling

673-8156

- New Construction
- Vinyl Siding & Windows

30+ years experience in all phases of building.

RICHARD McALLISTER

CONCRETE

Specializing in Foundations, Barnyards, Bunkers, Slabs

1165 VT Rte. 100, Newport
334-8497 • FREE ESTIMATES.



Bonnie Ingalls

Painting & Wallpapering

INTERIOR and EXTERIOR PAINTING

"For the woman's touch."

CELL 802 777-5117

OVER 30 YEARS EXPERIENCE.
www.facebook.com/bonnieingallspainting



RUSTY'S ELECTRIC

Russell Bowen
Fully Licensed & Insured
Professional Electrical Service
Master Electrician, VT & NH

15 Taylor St., Suite 4, Newport, VT
(802) 673-0407
E-mail: info@rustyselectric.com
Web: rustyselectric.com

EFFICIENCY EXCELLENCE NETWORK
Efficiency Vermont

GENERATORS!

WINGO Home standby & PTO generator dealer.

- SALES
- SERVICE
- INSTALLATION

AUTHORIZED SALES DEALER
GENERAC AUTOMATIC STANDBY & PORTABLE GENERATORS

Jack Degré Contractor Inc.

Your full-service builder for all your home improvement plans since 1980.



HARVEY BUILDING PRODUCTS

- New Homes • Vinyl Siding
- Replacement Doors & Windows
- Roofing • Remodeling • Masonry
- Chimney Cleaning • Kitchens • Baths
- Porches & Decks • Sunrooms

FREE ESTIMATES • FULLY INSURED

Office: 802-334-5180
Cell: 802-673-9742

148 Jackson St., P.O. Box 821, Newport City, VT




BIANCHI MEMORIALS

Sean Bianchi, Granite Specialist

(802) 766-9254
3212 U.S. Route 5
Derby, VT 05829

www.bianchimemorials.com
bianchimemorialsvt@gmail.com

GRANITE • MARBLE • QUARTZ • COUNTERTOPS

J.B.L. Hauling & Excavating

No job too big or too small.

Jason A. Lefebvre
Owner/Operator

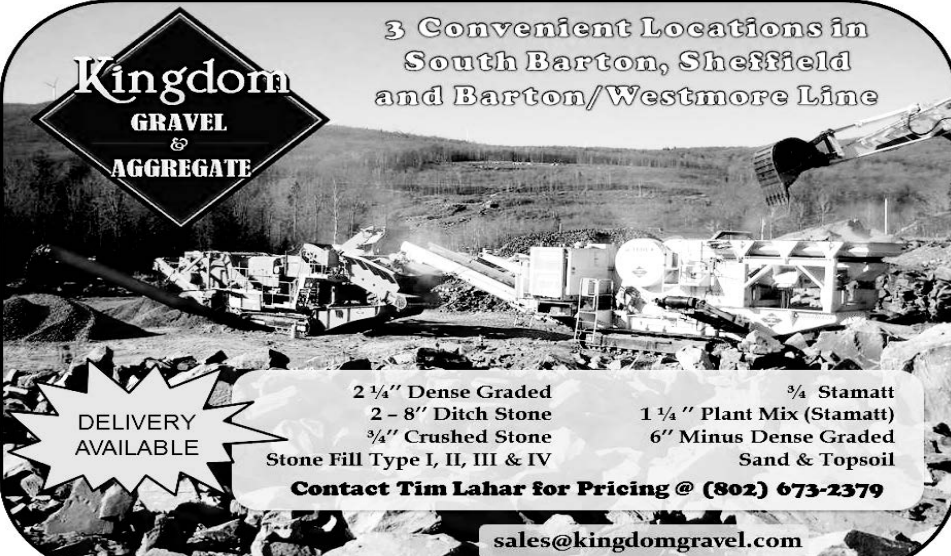
1588 Five Mile Sq. Road
Island Pond, VT 05846

Call: 802-673-4428
802-723-6367

jason@jblhaulingvt.com
www.jblhaulingvt.com



PONDS
ROADS
STONE WALLS
SITE CLEARING
FOUNDATIONS
SEPTIC SYSTEMS



Kingdom GRAVEL & AGGREGATE

3 Convenient Locations in South Barton, Sheffield and Barton/Westmore Line

DELIVERY AVAILABLE

2 1/4" Dense Graded	3/4" Stamatt
2 - 8" Ditch Stone	1 1/4" Plant Mix (Stamatt)
3/4" Crushed Stone	6" Minus Dense Graded
Stone Fill Type I, II, III & IV	Sand & Topsoil

Contact Tim Lahar for Pricing @ (802) 673-2379

sales@kingdomgravel.com

You can advertise with an ad this size for just

\$56.64

per week with our quick payer discount.

Call 525-3531 for more information.



Governor's Institutes accepting applications

Enthusiastic learners in grades nine through 12 are eligible to apply to one of the 11 fun and intensive summer programs through the Governor's Institutes of Vermont (GIV). Applications are now open at www.giv.org/applynow.

GIV offers young Vermonters the opportunity to dive in-depth into a topic they love, meet other students from around the state, and experience life on a college campus. Institute topics for 2018 include visual and performing arts; engineering; environmental science and technology; architecture, design and building; creative writing; mathematics; entrepreneurship; current issues and youth activism; astronomy; and information technology and digital media. These immersive programs take learning beyond the classroom and into the outside world, giving students the time and resources to take their interests to the next level at campuses all across the state.

Changes for this summer include the launch of a new Health and Medicine Institute in partnership with Area Health and Education Centers of Vermont, plus an all new Engineering Institute at Norwich University where students will explore green engineering and principles related to environment, transportation, and energy. Additionally, our Entrepreneurship Institute now offers college credit through dual enrollment. The Arts Institute, in its thirty-fifth year, provides world-class opportunities for young artists, giving access to professional mentors, a network of artistic peers from around Vermont, and great facilities in which to be creative and learn new skills.

With a combination of state and donor funding, GIV offers a sliding scale tuition that is based on family income and need. In 2017, approximately 81 percent of attendees received some level of financial aid. GIV hosted approximately 650 students in 2017.

"Vermont's most talented young people need opportunities to pursue their learning goals more deeply and connect with careers that interest them, and GIV is glad to be expanding those unique opportunities for the seventh year in a row," says Karen Taylor-Mitchell, GIV's executive director. "We are dedicated to offering nationally recognized immersion programs at a price every Vermonter can afford."

Applications for summer institutes will be accepted at www.giv.org/apply through March. Deadlines for student applications are set by individual high schools, so students are encouraged to contact their school counselors for more information.

For more information, or to donate to the GIV Scholarship Fund, call (802) 865-4448, or visit info@giv.org. — from the Governor's Institute of Vermont.

Building Trades

1 2 3 4 5 6 7 8

Joe Belisle: Cell: 802-673-7102
Former Co-Owner of B & D Builder Inc. Box 172, Palin Farm Rd. Derby, Vt 05829

JB Carpentry LLC

- Finish Works • Doors & Windows
- Kitchen and Bath Remolding
- Laminate and Hardwood Floor
- Repair and Maintenance of all type
- No Job To Small



PAUL CUTTING CONSTRUCTION

- ROOFING • NEW CONSTRUCTION
- REMODELING • SIDING • MASONRY
- REPLACEMENT DOORS & WINDOWS

802-754-2629



Tracy Degre

CONCRETE CONTRACTOR, INC.



American Concrete Institute®
Advancing concrete knowledge

Specializing in all types of concrete work.

- Foundations • Floors • Sidewalks
- Retaining Walls & Barnyards
- Manure Pits • Driveways
- Concrete Stamping
- Concrete Form Rentals

(802) 766-5389
1336 Beebe Road, Newport, VT 05855

An ad this size is just

\$25.17

per week with our quickpay discount.

Call 525-3531 for more information.



casella

FREE Estimates On...

- Clean-up Projects
- Renovations
- Construction Jobs
- Demolitions

Call CASELLA First!
1-800-639-3083
802-888-3627



MENARD'S EXCAVATING



& TIMBER HARVESTING

- Municipal & Residential Sewer/Water
- Road Building • Site Work
- Land Clearing • Concrete Slabs

Tony Menard 802-525-3071
Barton, VT Cell: 673-6120



REEN & SON

Mike & Jessica Green
104 Green Lane
W. Charleston, VT 05872

CONCRETE, INC.
802-895-4843
Cell 673-8441

Complete Concrete Services
Over 20 Years Experience
"Quality work & competitive pricing"

Like Us on Facebook

TANGUAY HOMES.COM

Construction

- 3D computer drawn plans
- Custom-built homes, garages, additions & sunrooms
- Owens-Corning lifetime architectural shingle roofs
- Standing seam roofs with 40 year paint warranty
- Custom designed kitchens & baths

100% Guarantee
on our estimates.
No hidden charges.
No going over budget

We guarantee our workmanship for three full years!
Backed by 25+ years of service to the community.

Visit our website today at:
www.tanguayhomes.com
tanguayhomes@comcast.net
802-334-1384

HERITAGE MEMORIALS

802-334-2314

GRANITE & QUARTZ COUNTERTOPS

INCORPORATED
Scott & Lori Bianchi, Owners
515 Union Street, Newport, VT 05855
Open Mon.-Fri. 9-5.
Any time by appointment.

www.heritagememorialsvt.com



BERNARD WHITE BUILDERS

We Can Handle All Your Building Needs!

- NEW HOMES
- ROOFING
- CEMENT WORK
- PAINTING
- REMODELING
- VINYL SIDING
- CHIMNEYS
- PORCHES & DECKS

• FREE ESTIMATES •

BERNARD JR. • 525-4022



THE KINGDOM CALENDAR

STRICT DEADLINE FOR EVENTS: MONDAY AT NOON. We reserve the right to reject or edit events. We do not take events over the phone. E-mail events to ads@bartonchronicle.com

Worship Schedules

ALBANY

ALBANY UNITED METHODIST CHURCH – "Amen Corner." Rev. Nathan Strong, 754-2790. [facebook.com/AlbanyUMChurch](https://www.facebook.com/AlbanyUMChurch). Sunday Worship Service at 10 a.m.

ST. JOHN OF THE CROSS CHURCH – Creek Road, East Albany. Watch for events.

BARTON

BARTON BAPTIST CHURCH – 1859 Glover Road, Barton – 802-525-3624. Pastor Ralph Fryman. Sunday School at 10 a.m. Sunday morning service at 11 a.m. Evening service at 6 p.m. Wednesday Bible study at 7 p.m.

BARTON UNITED CHURCH, United Church of Christ & United Methodist Church. Part of the Lake Region Parish. The Rev. Evelyn Coupe. 525-3607.

NORTHEAST KINGDOM QUAKER MEETING – Meets at 10 a.m. on Sundays at the Barton Public Library. For more info, call 525-6638 or 754-2029.

SOLID ROCK ASSEMBLY OF GOD – Church Street, Barton. 525-3888. Interim Pastor Larry Rohm & his wife, Rose. Sunday Services: Sunday School, 9:30 a.m., all ages; Worship Service, 10:35 a.m.

ST. PAUL'S CATHOLIC CHURCH – 85 St. Paul's Lane, Barton. No current weekend Masses. www.MostHolyTrinityParishVT.com or 525-3711.

BROWNINGTON

NEW HOPE BIBLE CHURCH OF BROWNINGTON – (Formerly Brownington Center Church.) Pastor Dan Prue Jr., 334-9991. Sunday Worship and Children's Church at 10 a.m. with fellowship following. Evening service at 6:30 p.m. All are welcome to visit and be a part of our church family. Handicapped accessible. Teens and youth ministries weekly.

BROWNINGTON VILLAGE CONGREGATIONAL CHURCH U.C.C. – Organist Mark Violette. Minister: Rev. Alyssa May. Sunday Worship from 11 a.m.-noon. Coffee fellowship following the service. The church is handicapped accessible and hearing enhancement is available. Everyone is welcome, and parents are encouraged to bring children.

BURKE

EAST BURKE CONGREGATIONAL CHURCH, UCC – The Rev. Judi Horgan. All are welcome here! "God is still speaking!" Worship Service and Sunday School at 8:45 a.m. Holy Communion the first Sunday of each month.

WEST BURKE UNITED METHODIST CHURCH – The Rev. Danielle Rodrigues, 467-3466. Sunday church service at 10 a.m. Holy Communion first Sunday of each month.

CRAFTSBURY

EAST CRAFTSBURY PRESBYTERIAN CHURCH – East Craftsbury Rd., Craftsbury, VT. 802-586-7707. E-mail: ecpovt@gmail.com. Website: www.eastcraftsburypresbyterian.org. Rev. Deborah McKinley, Pastor, and John Rowell, Organist. SUNDAYS: Adult Bible Study at 10 a.m. Worship at 11 a.m. with Children's Sunday School during worship.

OUR LADY OF FATIMA CATHOLIC CHURCH – Saturday evening Mass at 6 p.m. from Memorial Day to Columbus Day weekend. Our Lady of Fatima is part of the Mary Queen of All Saints Parish in Hardwick. Rev. Claverito Mignio, administrator. 802-472-5544

UNITED CHURCH OF CRAFTSBURY – an Open and Affirming Congregation; affiliated with the United Church of Christ. Sunday services at 10 a.m. Sunday School offered during worship. Handicapped accessible. No matter who you are or where you are on your spiritual journey, you are welcome. Church phone: 586-8028. www.unitedchurchofcraftsbury.com Find us on Facebook, or e-mail unitedchurchofcraftsbury@gmail.com.

DERBY & DERBY LINE

BIBLE BAPTIST CHURCH – 183 Elm St., Derby Line. Pastor Richard Daniels. Sunday School for all ages at 10 a.m. Sunday Service (nursery available) at 11 a.m. PM service, call for information. Wednesday Bible Study at 7 p.m. For more info, call 873-3258.

CHURCH OF GOD – Crawford Road, Derby. Morning Worship 9 a.m., Evening Worship, 6 p.m. Wednesday Bible Study 7 p.m. For more information call 334-5916. Pastor Laurence Wall. www.newportcog.com

CORNERSTONE EVANGELICAL FREE CHURCH – Quarry Road, past McDonald's. Pastor Glenn Saaman, 334-5282. Sunday School at 9 a.m. and worship at 10:30 a.m. on Sundays.

ST. EDWARD THE CONFESSOR – Saturday at 6 p.m. in the church (Sunday and Holy Day Vigil). Sunday & Holy Day masses at 8:30 a.m. in the church. Weekday masses are Monday and Thursday at 8:30 a.m. in the chapel, Tuesday at 6 p.m. in the chapel, Friday at 6 p.m. in the church. Reconciliation anytime by appointment as well as Saturday 5:30-6 p.m. Fr. Patrick I. Nwachukwu, S.D.V. 802-334-5066.

FIRST UNIVERSALIST PARISH (UJ), DERBY LINE – 112 Main Street, Derby Line. Services each Sunday at 10 a.m. Potluck social hour following service. Handicapped accessible. We are a welcoming congregation. Church phone 873-3563. Church e-mail: 1u derbyline@gmail.com. Church website: www.derbylineu.org. February 4th – [Speaker Dough Bouchard on Understanding the teachings of Jesus Christ differently – The Gnostics.](http://www.derbylineu.org)

DERBY COMMUNITY CHURCH – 3064 U.S. Route 5, Derby. Pastor Mike Haddad. 9:15 a.m. Sunday School for preschool through adults. 10:30 a.m. Worship Service. Care provided for children through five years of age. Call 766-5500 for information about Bible Study, Teen Youth Group, Women's Bible Study, Men's Fellowship Breakfast, and other opportunities waiting for you!

EAST & WEST CHARLESTON

EAST CHARLESTON CHURCH OF THE NAZARENE – Sunday morning worship service at 11 a.m. For more information or directions, call the church at 723-4824.

FREE WILL BAPTIST CHURCH – West Charleston. Scott Cianciolo, Pastor. 802-895-4643. Sunday morning worship at 9 a.m. with Sunday School for all ages from 10:45 to 11:30 a.m. Wednesday evening choir practice and potluck fellowship from 5:30 to 6:30 p.m., followed by adult prayer, Bible study, and youth activities from 6:30 to 7:30 p.m. All are welcome. Please call for more info.

PLYMOUTH CONGREGATIONAL CHURCH, EAST CHARLESTON – Guest Pastors. Worship service and Sunday school at 10 a.m. Ramp and elevator available.

ST. BENEDICT LABRE – Sunday & Holy Day masses at 11:30 a.m. Weekday mass is on Wednesdays at 7 p.m. Reconciliation anytime by appointment as well as Wednesday from 6:30-7 p.m. Fr. Patrick I. Nwachukwu, S.D.V. 802-334-5066.

GREENSBORO

ST. MICHAEL'S CHURCH – Mass on Sundays at 10:30 a.m. Parish Administrator Fr. Claverito S. Mignino, phone 472-5544.

GREENSBORO UNITED CHURCH OF CHRIST – 165 Wilson Street. 533-2223. Office hours: Tues.-Thurs. 10-12 & 1:30-4:30. Weekly 10 a.m. Sunday services. Communion Service first Sunday of month. Reverend Rona Kinsley, Interim Pastor. Hal Parker, Music Director. Coffee hour following service. We are an Open and Affirming Congregation. All are welcome. Website: guccvt.org

GLOVER & WEST GLOVER

GLOVER COMMUNITY CHURCH & WEST GLOVER CONGREGATIONAL CHURCH – Part of the Lake Region Parish. The Rev. Evelyn Coupe. 525-3607.

HARDWICK

ST. JOHN THE BAPTIST EPISCOPAL CHURCH – 39 West Church Street, Hardwick. 802-472-5979. Sunday Service at 10 a.m. Child care available. Coffee hour following the service. Home to the Hardwick Area Food Pantry & winter clothing donations.

ST. NORBERT CHURCH – Saturday Vigil Mass 4 p.m. and Sunday 8:30 a.m. Parish Administrator Fr. Claverito S. Mignino, 193 S. Main St., P.O. Box 496, Hardwick, VT 05843. Phone 472-5544. Confession at 3:15 p.m. each Saturday before Mass or by appointment.

UNITED CHURCH OF HARDWICK – South Main St., Hardwick. Parsonage: 472-6353. Church: 472-6800.

HOLLAND

HOLLAND COMMUNITY CHURCH – Pastor John Genco, 766-2901. Sunday Worship at 10 a.m. Wednesday evening Bible study at 6:30 p.m. Communion first Sunday of every month. Handicapped accessible. Please join us!

IRASBURG

GRACE BRETHREN CHURCH OF IRASBURG – Pastor Scott M. Libby, 754-2363. Wednesdays, devotional & prayer meeting in Newport at 7 p.m. Sundays, morning worship at 10 a.m. with discussion and application of sermon at 11:35 a.m.

ST. JOHN VIANNEY CATHOLIC CHURCH – 85 Creek Rd., Irasburg. No current weekend Masses. www.MostHolyTrinityParishVT.com or 525-3711.

UNITED CHURCH OF IRASBURG – Irasburg. Rick Shover, Pastor. (802) 754-8448. Service is at 9:30 a.m. Communion is first Sunday of every month. All are welcome. Handicapped accessible. Children's story hour/childcare available during service.

TRINITY FAMILY CHURCH – Bible Worship at the Irasburg Grange Hall, Sundays at 9:30 a.m.

NEW HOPE BIBLE CHURCH OF IRASBURG – at the River of Life. Sunday school for all ages at 9 a.m. Sunday Worship at 10 a.m. Pastor George Lawson, 754-2423 and Pastor Dan Prue Jr., 334-9991.



Westmore Community Church

ISLAND POND

FIRST CONGREGATIONAL CHURCH OF BRIGHTON, ISLAND POND – The Rev. Alan Magoon, Pastor. Church & parsonage phone: 723-5037. Sunday Worship, 10 a.m., Sunday School, 11:15 a.m. Prayer Meeting Thursdays at 6:30 p.m., Bible Study Thursday at 7 p.m. Handicapped accessible (chair lift). "A friendly church in a friendly community welcomes you!"

BRIGHTON BAPTIST CHURCH – Sunday service at 11 a.m., and 6 p.m. Sunday School, 10 a.m. For more information, call (802) 723-4800.

GREEN MOUNTAIN BIBLE CHURCH – Route 105, 1 mile west of the village of Island Pond. Sunday service at 10 a.m. and Wednesday service at 7 p.m. First Wednesday: Hymn Sing. Pastor Neal Perry, 754-2396.

ST. JAMES THE GREATER CHURCH – Sunday & Holy Day Masses at 10:10 a.m. Weekday Mass on Wednesday at 5:15 p.m. and Saturday at 4 p.m. (Sunday and Holy Day Vigil). Reconciliation anytime by appointment as well as Saturday from 3:30-4 p.m. Fr. Patrick I. Nwachukwu, S.D.V. 802-334-5066.

CHRIST EPISCOPAL CHURCH – 9 a.m. Sunday Services. E-mail: ipchristchurch@yahoo.com

LOWELL

LOWELL BIBLE CHURCH – Pastor David DiZazzo (673-9459): Sunday Worship & Sunday School at 10 a.m. with coffee hour following service. Wednesday night Bible study at 7 p.m. in Lowell. Thursday night Bible Study at 6:30 p.m. in Newport. Please call for information & directions.

ST. IGNATIUS OF LOYOLA CATHOLIC CHURCH – 151 Hazen Notch Rd., Lowell. No current weekend Masses. www.shsvsi.com or 988-2608.

MORGAN

MORGAN CHURCH – Pastor Mike DeSena. Traditional Service Sundays at 9 a.m. with Sunday School and Nursery available during the service. Contemporary Service Saturdays at 6 p.m. with a potluck supper the third Saturday of each month. Several small group Bible studies both evening & morning during the week. Please call 895-4526 or visit our website at www.themorganchurch.com for more information.

NEWPORT

NEWPORT ADVENT CHRISTIAN CHURCH – 128 Vance Hill Rd., Newport Center. Sunday morning worship services begin at 9:45. Sunday school classes for all ages begin at 11 a.m. Bible study & prayer time held Wednesday evenings at 6:30 p.m. Various fellowship times include breakfasts, dinners, and game nights, etc. Pastor Chris Barton. Everyone is welcome.

CHRISTIAN SCIENCE SOCIETY – 362 East Main Street, Newport. Church services on Sundays at 10 a.m. at the church. Wednesday evening meetings (5:30 p.m.) will be Skype through May 1. Anyone who wants to join in on Skype, please call 334-5840 or 334-2051 to be added to the group. All are welcome.

LIFE IN CHRIST FELLOWSHIP – 81 Weaver St., Newport. Apostolic Church. Senior Pastor: Janet Bishop. Associate Pastor: Allan Bishop. Sunday morning worship, 10 a.m. Phone 334-7220 for information. All are welcome!

NEWPORT CHURCH OF THE NAZARENE – 115 Elm Street, Newport. Pastor Paul Prince. You are welcome to join us for Sunday School at 9:45 a.m. (for all ages). Worship Service begins at 11 a.m. Sunday evening service at 6 p.m. Wednesday Prayer Meeting at 7 p.m. Please call the church at 334-2628 for further information. We care about you!

NEWPORT CHURCH OF CHRIST – Corner of Sias Avenue and Prouty Drive, Newport. Sunday Bible Class at 10 a.m.; Worship Service at 11 a.m.; Wednesday Bible Study at 6:30 p.m. All are welcome. Church office phone: 334-2028.

THE CHURCH OF JESUS CHRIST OF LATTER-DAY SAINTS – Eric Pingree, Branch President; Marston Cubit, First Counselor; David Croteau, Second Counselor. Sacrament meeting at 9 a.m. with Sunday School at 10:15 a.m.; Priesthood and Relief Society at 11:10 p.m. The chapel is located at 3417 Darling Hill Road in Derby. 334-5700 or 334-5339.

FAITH LIGHTHOUSE ASSEMBLY OF GOD – 51 Alderbrook Road, Newport. Pastor Sam Gunn. Wednesday study at 6 p.m. Thursday evening prayer at 6 p.m. Sunday morning Bible school at 9:30 a.m. Sunday morning worship at 10:30 a.m. Sunday evening youth group at 6 p.m. (802) 624-3008, e-mail: the.faith.lighthouse@gmail.com

ST. MARK'S EPISCOPAL CHURCH – 44 Second Street, Newport. 334-7365. Rev. Jane Butterfield, interim priest. Sunday Services: Holy Eucharist & Sunday School, 9:30 a.m. Handicapped accessible. Food shelf is open Mondays from 11:20 a.m. to 12:30 p.m.

ST. MARY, STAR OF THE SEA – Saturday at 4 p.m., (Sunday and Holy Day Vigil). Sunday & Holy Day masses at 10 a.m. and 7 p.m. Weekday masses are Monday and Thursday at 5:15 p.m., Tuesday, Wednesday and Thursday at 8 a.m., Saturday at 7:30 a.m. Reconciliation anytime by appointment as well as Saturday 3-4 p.m. Fr. Patrick I. Nwachukwu, S.D.V. 802-334-5066.

SEVENTH-DAY ADVENTIST CHURCH – 37 Concord Ave., Newport. Pastor Cornell Preda, 487-4632 or 334-3096. Saturday Sabbath School at 9:30 a.m. Saturday Worship Service at 11 a.m. Tune in to 96.1 FM (WJSY-LP) for quality Christian radio broadcasting 24/7 or visit us online at www.wjsy.org.

NEWPORT BAPTIST CHURCH – 306 East Main Street. The Rev. David Lisner, Pastor. 334-5554. Sunday School for all ages begins at 9:15 a.m. Sunday morning worship service begins at 10:30 a.m. Children's Church with nursery available. Handicapped accessible. Wednesday night Bible Study/Prayer Meeting at 6:30 p.m. Kid's Club begins on Friday nights with a light meal at 6 p.m. For more information, call Nancy at 766-5094. Our church services are broadcast on the PEG Channel 17 on Fridays at 4 p.m. and again on Sundays at 5:30 p.m. Our services are also online through our website at www.newportbaptistchurchvt.org.

UNITED CHURCH OF NEWPORT – 63 Third Street. 334-6033. Pastor James Merriam. 10 a.m. Sunday Worship Service with nursery for ages 5 years and under. We are a combined United Church of Christ and United Methodist congregation with a tradition of lively music, open-minded exploration, and strong community service. Come and join us to find out how you can serve others while deepening your walk with God. Other activities include choirs, handbells, food shelf, youth group, community lunch, women's fellowship, prayer partners, Bible study, book club, and more!

NEWPORT CENTER

NEWPORT CENTER UNITED METHODIST CHURCH – An Evangelical Bible Based Congregation and Member of the Conservative Confession Methodist Movement. Sunday morning worship at 9:30 a.m. with childcare provided. Coffee Fellowship & Communion first Sunday of the month. Christian Women's Group first Saturday of the month. TLC "The Lord's Choir" Handbells practices weekly. Other activities announced. "In the tradition of the Reformation."

NORTH TROY & TROY

FIRST CONGREGATIONAL CHURCH – 14 Main Street, North Troy. Services on the last Sunday of every month at 4 p.m. with Pastor Rick Shover.

ST. VINCENT DE PAUL CATHOLIC CHURCH – 18 North Pleasant St., North Troy. No current weekend Masses. www.shsvsi.com or 988-2608.

SACRED HEART CATHOLIC CHURCH – 130 South Pleasant St., Troy. Masses held Saturdays at 6 p.m. and Sundays at 8 a.m. www.shsvsi.com or 988-2608.

ORLEANS

ORLEANS FEDERATED CHURCH – Rev. Alyssa May. Sunday Worship Services at 9 a.m. Community food shelf hours are 8:30-10:30 a.m. the 2nd and 4th Mondays of each month.

ST. THERESA'S CATHOLIC CHURCH – 44 East St., Orleans. Masses on Saturdays at 4 p.m. and Sundays at 10:30 a.m. 525-3711. www.MostHolyTrinityParishVT.com

ORLEANS COUNTY

NORTHEAST KINGDOM QUAKER MEETING – Meets at 10 a.m. on Sundays at 115 Scott Lane, Barton, VT 05822 (just off Burton Hill Rd.) For more info, call 525-6638 or 754-2029.

SHEFFIELD

SHEFFIELD FEDERATED CHURCH – Berry Hill Road. Sean Quinn, Pastor. 802-873-4558. Sunday Worship Services 10:30 a.m.

SUTTON

SUTTON FREE WILL BAPTIST CHURCH – The Rev. Mark Heinrichs, supply pastor, 525-4214, or church 467-8585. Church services: 9 a.m., Adult Bible Study, Sunday School. 10:15 a.m., Morning Worship. Fridays at 7 p.m., music practice. Fellowship hour after church.

WESTFIELD

WESTFIELD CONGREGATIONAL CHURCH – Main Street (Route 100) in Westfield. We welcome all to worship services and music commencing at 10 a.m. on Sundays. Refreshments and fellowship following services. For questions, call Pastor John Klar at 673-4852.

WESTMORE

WESTMORE COMMUNITY CHURCH CONGREGATIONAL UCC – Grounded in Christ, open to all, on the shores of Willoughby Lake with thoughtful worship, lovely music and choir with Mark Violette, organist, on Sundays at 9 a.m. Coffee, refreshments, and fellowship follow the service. Church is handicapped accessible.

WHELOCK

THE ROCK – "A Holy Spirit empowered church" meeting at the Wheelock Town Hall on Thursday and Sunday nights at 6 p.m. Pastor: Butch Ainsworth. 1-877-868-7625.

Need to make a change?

Please e-mail worship changes to ads@bartonchronicle.com by noon on Mondays.

THE KINGDOM CALENDAR

STRICT DEADLINE FOR EVENTS: MONDAY AT NOON. We reserve the right to reject or edit events. We do not take events over the phone. E-mail events to ads@bartonchronicle.com

****SEND US YOUR EVENTS!** It's free for events that are a benefit, nonprofit, or free to attend. Events are also listed online at www.bartonchronicle.com/events.

WEDNESDAY, JANUARY 31

FULL MOON SNOWSHOE IN CRAFTSBURY

There will be a Full Moon Snowshoe on Wednesday, January 31, from 5:30 to 7 p.m. from Craftsbury Village to WonderArts Greenspace. Park and meet at the Town Garage. A bonfire and hot cocoa will be held at the end. Bring snowshoes or reserve some for \$5 through the Craftsbury Outdoor Center. To RSVP, visit <https://fs10.formsite.com/wonderwisdom/form19/index.html>. For more information, visit www.WonderArtsVT.org or call 533-9370.

SATURDAY, FEBRUARY 3

INDOOR YARD SALE & SILENT AUCTION FUNDRAISER

The North Country Union Junior High School band and chorus will be holding an indoor yard sale and silent auction on Saturday, February 3, in the NCUJHS cafeteria from 9 a.m. to 3 p.m. to help students raise money for their end-of-year trip. For more information, e-mail peter Storings, NCUJHS band director, at peter.storings@ncusvt.org.

BREAD BAKING WORKSHOP IN HARDWICK

Grow Your Own will host a bread baking workshop on Saturday, February 3, from 11:30 a.m. to 1:30 p.m. led by Charlie Emers of Patchwork Bakery. This session will be a fun, hands-on event followed by a shared meal and will be held at the Center for an Agricultural Economy in Hardwick. Children are welcome but pre-registration is mandatory. Call 472-5940 by January 31 to reserve a place.

FISHING DERBY ON LAKE SEYMOUR

The Derby Line Fireman's Association's annual ice fishing derby will be held Saturday and Sunday, February 3 and 4, on Lake Seymour in Morgan. Derby starts at 12 a.m. on Saturday morning and ends at 3 p.m. on Sunday. Grand prize is a Jiffy gas powered ice auger. Other prizes include a pop-up ice shanty, four tip-ups, and two \$100 cash prizes. See any local Derby Line firefighter for raffle tickets or call Rob Joyal for more information at 873-3414.

OSTEOPOROSIS EDUCATION GROUP

Join Better Bones of the Northeast Kingdom as they welcome Bone Builder's instructor Maureen McGuire as their guest speaker on Saturday, February 3, at 1 p.m. in the Community Room of the Community National Bank in Derby. Following a presentation about Bone Builders, Maureen will lead the group in bone building exercises. All are welcome to attend this free event, but registration is required as seating is limited. To register or for more information, visit www.BetterBonesNEK.org or contact Mary King at 535-2011.

HOUGHTONANNY AND POTLUCK AT THE MUSIC BOX

Call it a sing-along, or a song circle, or a Hootenanny, or even a Houghtonanny — they're all the same. Why a Houghtonanny? It will be led by Don Houghton on Saturday, February 3, at 6 p.m. at The Music Box in Craftsbury. Bring your singing voice and/or musical instruments. This is also a potluck so please bring a dish to share. The Music Box will have coffee, tea, cider, cookies, cheese and crackers. Free of charge but donations are always accepted. For more information, call 586-7533.

BITTERSWEET WOMEN'S WEEKEND PRESENTED BY COLAVITA

The founders of the Rasputitsa epic gravel bike challenge have created BitterSweet, a fun and exciting all women's weekend hosted at NorthWoods Stewardship Center in East Charleston with small group guided events and rich conversations. The weekend will take place Saturday, February 3, at 8 a.m. through Sunday, February 4, at noon, and will be full of outdoor activities including options to Nordic ski, snowshoe, fatbike, skimo, yoga and more. Meals included. Registration is limited. For more information, e-mail ride@rasputitsagravel.com.

SUNDAY, FEBRUARY 4

VFW AUXILIARY ALL-YOU-CAN-EAT BREAKFAST

VFW Auxiliary Post 798 will hold it's monthly all-you-can-eat breakfast on Sunday, February 4, from 8 to 11 a.m. at the post home in Newport. Open to the public. Cost is \$7 for adults and \$5 for children 12 and under. Breakfasts are held the first Sunday of every month.

TEMPEST TRIO TO PERFORM IN ST. JOHNSBURY

The Tempest Trio will perform on Sunday, February 4, at 3 p.m. at the United Community Church South in St. Johnsbury. Presented by the Northeast Kingdom Classical Series. Visit www.nekclassicalseries.org for more information.

TUESDAY, FEBRUARY 6

BALLET JAZZ OF MONTREAL TO PERFORM AT LYNDON INSTITUTE

Ballet Jazz of Montreal will perform an excerpt from their most ambitious work to date, the Leonard Cohen tribute *Dance Me* at Lyndon Institute Alumni Auditorium on Tuesday, February 6, at 7 p.m. Tickets and more information are available by calling 748-2600 or online at kcpresents.org.

HEALTHY LIVING FOR YOUR BRAIN AND BODY

Healthy Living for your Brain and Body, presented by the Alzheimer Association, will be held at Northeastern Vermont Regional Hospital in St. Johnsbury on Tuesday, February 6, from 6 to 8 p.m. To register, call Pam Smith at 751-0427 or e-mail info@nekouncil.org and put "caregivers" in the subject line. Registration is required for this free workshop.

WEDNESDAY, FEBRUARY 7

JOURNALISTS SPEAK ON HOW TO READ THE NEWS AT GOODRICH LIBRARY

Journalists Cindy Skrzycki and Pulitzer Prize winner David Shribman will discuss the current news environment and how best to make sense of it in a talk at Goodrich Memorial Library in Newport on Wednesday, February 7, at 7 p.m. Their talk, "The News about the News," is part of the Vermont Humanities Council's First Wednesdays lecture series and is free and open to the public. For more information, contact the library at 334-7902 or the Vermont Humanities Council at 262-2626 or info@vermonthumanities.org, or visit www.vermonthumanities.org.

WEDNESDAY NIGHT FILM SERIES AT AT HIGHLAND CENTER

The Highland Center for the Arts in Greensboro presents its Wednesday Nights Film Series on Wednesday, February 7, from 6 to 8 p.m. featuring *The Girl on the Train* (2006). For more information, call 533-2000 or e-mail boxoffice@highlandartsvt.org, or visit www.highlandartsvt.org.

IMPROV COMEDY BASICS WITH JUSTIN LANDER

Justin Lander of Modern Times Theatre and Vermont Vaudeville will teach a six-week Improv Comedy Basics workshop for youth starting Wednesday, February 7, from 3:30 to 5 p.m. at Highland Center for the Arts in Greensboro. There is a one-time registration fee of \$60. The class is open to youth ages 12 to 18. For more information or to register, contact 533-2000, e-mail boxoffice@highlandartsvt.org, or visit www.highlandartsvt.org.

THURSDAY, FEBRUARY 8

VALENTINE'S BINGO IN GLOVER

There will be a Valentine's Bingo on Thursday, February 8, at 6 p.m. at the Glover Fire Station with prizes donated from area businesses. Cost is \$1 per card of \$5 for six cards, and there will also be a 50/50 drawing. Hot dogs, popcorn, and other refreshments will be available.

TALENT SHOW AT NORTH COUNTRY

On Thursday, February 8, at 7 p.m., in the North Country Union High School auditorium, there will be a talent show featuring North Country's best vocalists, instrumentalists, dancers, magicians, and comedians. The event will be a fun, family friendly show modeled after "America's Got Talent." Proceeds will benefit the U.S. History trip to Philadelphia, Gettysburg, and Washington, D.C. in April. Suggested donation is \$5.

SATURDAY, FEBRUARY 10

ITALIAN DINNER NIGHT IN DERBY LINE

Celebrate Valentine's Day at St. Edward's Parish Hall in Derby Line on Saturday, February 10, from 5:30 to 8:30 p.m. Enjoy live entertainment and authentic Italian food, beverages, and desserts. Early tickets available until 3 p.m. on Friday, February 9, by calling 334-7250 or 334-5066. Cost is \$10 for adults, \$7 for children ages six to 12, free for those under five, and family price is \$30. Prices at the door are \$13 for adults, \$9 for children six to 12, free for children under five, and family price is \$35. All proceeds benefit the parish maintenance needs.

VALENTINE'S DAY DANCE AT PAUL'S SUGARHOUSE

Paul's Sugarhouse in Derby will hold a Valentine's Day Dance on Saturday, February 10, from 7 to 11 p.m. Music will be provided by The Echoes (formerly the Warner Band), there will be a 50/50 raffle, and the kitchen will be open. BYOB. Cost is \$10 per person.

THE BEST OF THE 2017 MIDDLEBURY NEW FILMMAKERS FESTIVAL

Jay Craven will screen and discuss two films from the Middlebury New Filmmakers Festival at the Highland Center for the Arts on Saturday, February 10, from 7 to 10 p.m. Cost is \$10 for adults, \$5 for children. For more information, contact 533-2000, e-mail boxoffice@highlandartsvt.org, or visit www.highlandartsvt.org.

MAKE POP-UP VALENTINE CARDS IN HARDWICK

Come to the Judevine Memorial Library in Hardwick on Saturday, February 10, from 10 a.m. to noon and make pop-up Valentine cards with Ellen Bresler. Paper, scissors, and doilies provided. All ages welcome, but young ones should be accompanied by an adult. This event is free and open to the public. For more information, call the library at 472-5948.

OPEN LODGE AND TRAILS: ISLAND POND CARNIVAL WEEKEND

Come explore the NorthWoods Stewardship Center's trails by ski or snowshoe on Saturday, February 10. Free trails open from 9 a.m. to 3 p.m. Gear rental is \$5. Enjoy hot cocoa and cookies after in the cozy lodge. To learn more about the Island Pond Carnival Weekend events, check out www.travelthekingdom.com. The NorthWoods Stewardship Center is located in East Charleston. For more information, call 723-6551 or visit www.northwoodscenter.org.

BRIGHTON STATE PARK SNOWSHOE HIKE

Join NorthWoods Stewardship Center in East Charleston on Saturday, February 10, at 9 a.m. for a snowshoe hike at Brighton State Park. Snowshoe rentals are \$10. Meet at the NorthWoods to carpool to the park. For more information, call 723-6551 or visit www.northwoodscenter.org.

KINGDOM GAMES RETURNS TO NEWPORT

The Kingdom Games, a series of competitive athletic events for all ages and skill levels, returns to Newport starting February 10th. The events take place on the ice and in the water of Lake Memphremagog. This year's winter Kingdom Games include the Memphremagog Women's Pond Hockey Tournament on February 10-11; the Memphremagog Winter Swim Festival on February 24-25; and the Memphremagog Ice Skating Festival on March 3-4. Wintertime events are hosted by EastSide Restaurant and Newport City Inn and Suites. For more information, visit <http://kingdomgames.co>.

SUNDAY, FEBRUARY 11

TURKEY DINNER IN TROY

Celebrate Valentine's Day with great music, food, and friends at the St. Valentine Raffle Dinner held at Sacred Heart Parish Hall in Troy on Sunday, February 11. There will be a turkey dinner starting at noon. Raffle tickets are \$20 each (includes one dinner), additional dinner are \$10 each with children under 12 admitted free. Music provided by Janet Lussier, Friends and Drifters. Sponsored by the Ladies of the Sacred Heart to benefit the parish building's maintenance fund.

REGISTRATION REQUESTED

WILLOUGHBY LAKE ICE FISHING DERBY

The fifth annual Willoughby Lake Ice Fishing Derby will be held Friday, Saturday, and Sunday, February 23, 24, and 25, on Willoughby Lake in Westmore. To register or for more information, visit the Willoughby Lake Store on Route 5A or call 525-3300.

NORTHWOODS WINTER DAY CAMP

NorthWoods Stewardship Center's Winter Day Camp is a great opportunity for kids to get outside and learn new skills during their February school break. Kids will explore the winter woods on snowshoes and cross-country skis, build snow shelters, cook over a fire, learn how to track wildlife in the snow, and warm up with arts and crafts by the woodstove. Homemade lunch and recreation gear provided. Camp runs Monday, February 26, through Thursday, March 1, from 9 a.m. to 3 p.m. each day with the possibility of early drop-off/pickup. For ages six to 14. Register online at www.northwoodscenter.org or call Maria Young at 723-6551, extension 303, or e-mail maria@northwoodscenter.org for more information. The NorthWoods Stewardship Center is located in East Charleston.

ANNUAL PLANT SALE

Orleans County Conservation District is having its annual Plant Sale. Visit www.vacd.org/conservation-districts/orleans-county for the full online catalog and order form. Orders are due by March 31 with pickup on Saturday, May 5, in front of the USDA office in Newport. For more information or to have a catalog mailed, call Sarah Damsell at 334-6090, extension 7008, or e-mail sarah.damsell@vt.nacdnet.net.

AARP TAX AIDE PROGRAM

Free tax returns prepared for taxpayers with low to moderate income, with special attention to those 50 and older, every Wednesday beginning February 7 from 8:45 a.m. to 12:30 p.m. at the Goodrich Memorial Library in Newport. Call Chris at 279-0442 for an appointment. Taxes prepared every Friday in Derby at the Dailey Memorial Library from 9 a.m. to 12:45 p.m. beginning February 2. Call the library at 766-5063 for an appointment.

NEED A PLACE TO WATCH THE SUPER BOWL? COME ON OUT AND WATCH IT WITH US!

Friday: Prime Rib
Saturday: Chef's Choice
Fresh from Maine Seafood



**Restaurant open! Kitchen hours:
Thurs.-Sat. noon-8 p.m., Sun. noon-5 p.m.**



THE GAP
PUB AND GRILL




802-525-4187

LAKE WILLOUGHBY WESTMORE, VERMONT

Celebrating 44 years in business!

PAUL'S DANCE HALL



**Route 5,
Derby
766-5077**

Sat., Feb. 10 ♥ 7-11 p.m.

Valentine's Dance

Music by *The Echoes* (formerly The Warner Band)

♥ \$10 Per person ♥ 50/50 Raffle ♥ B.Y.O.B.
Kitchen will be open.

HIGHLAND

LODGE

in Greensboro, VT

Valentine's Day Dinner
by Chef Chad Hanley
\$65 prix fixe 5 courses:
House-made Squash Ravioli,
Walnut & Berry Salad,
Beet Risotto,
Seared Duck Breast or Shrimp Scampi,
Chocolate Raspberry Torte
RSVP eat@highlandlodge.com

Upcoming Events
House Bar & Kitchen Open 5 -9pm Thu-Sat
Feb. 2, Blue Fox, Blues Guitar
Feb. 9, Howie Cantor & Jeremy Harple
Acoustic roots and Americana
Feb. 16, Dana & Sue Robinson
Guitar, banjo, fiddle and song
Thursday is Trivia Night!
Starting at 6:30.
Saturdays Après-Ski:
House Bar opens early @ 2pm
for drinks and snacks.

Visit www.highlandlodge.com for details on menus and events.

THE KINGDOM CALENDAR

STRICT DEADLINE FOR EVENTS: MONDAY AT NOON. We reserve the right to reject or edit events. We do not take events over the phone. E-mail events to ads@bartonchronicle.com

ONGOING EVENTS

****PLEASE SUBMIT CORRECTIONS OR DELETIONS IF YOUR LISTING NEEDS UPDATING TO ADS@BARTONCHRONICLE.COM**

ADULT LEARNING CENTER FREE SERVICES

Northeast Kingdom Learning Services Community Education Center on 1 Main Street in Newport offers GED preparation and GED testing, High School Completion Plans for teens (16 years and older) and adults, preparation for standardized tests such as the AccuPlacer for CCV or the ParaPro for public school teaching; basic computer skills instruction; academic skills assessment in reading, writing and math; and instructions in most academic disciplines. All adult education services are free of charge to the student. The tutorial program offers tutoring services at an hourly rate for grades K-12. The adult learning center is open Monday through Thursday from 8:30 a.m. to 5 p.m.; tutorial services K-12 are scheduled by appointment. For more information, call 334-2839.

ALCOHOLICS ANONYMOUS

AA meetings are held in Newport, St. Johnsbury, and most towns in the Northeast Kingdom. For detailed information call AA at 334-1213 or toll free at (877) 334-1213, or visit www.aavt.org and click on "District 3." Also visit www.aavt.org and click on "District 3" for a comprehensive schedule.

AL-ANON MEETING IN CRAFTSBURY COMMON

Thursdays at 6 p.m., at the United Church in Craftsbury Common. Discussion.

AL-ANON MEETING IN DERBY

Saturdays from 6 to 7 p.m., at Newport Church of God, Crawford Road in Derby. If your life is affected because someone you love has an addiction, Al-Anon can help. Offering understanding, support, and a community that understands how you feel.

AL-ANON MEETING IN NEWPORT

Tuesdays at 7 p.m. at St. Mark's Episcopal Church parish house on Second Street in Newport. Discussion meeting is open to anyone whose life is affected by someone's addictions. Newcomers welcome.

ALZHEIMER'S CAREGIVERS SUPPORT GROUP

Monthly Caregivers Support Group meeting for those dealing with family members or friends diagnosed with Alzheimer's or other related dementia. Informal gathering. All welcome.

NEWPORT – Caregivers support group meets every fourth Tuesday from 6:30 to 8 p.m. at North Country Hospital in Newport, 2nd floor waiting room (Room 221). For further information, call (800) 272-3900 or e-mail suzi_dix@sympatico.ca.

ST. JOHNSBURY – Caregivers support group meets last Monday of each month at the Northeastern Vermont Regional Hospital, room 244, in St. Johnsbury. For further information, call Pam at the NEK Council on Aging at 748-5182, or 1-800-642-5119.

AMERICAN LEGION BARTON POST #76 MEETINGS

First Wednesday of every month at 7 p.m., at the Legion Hall in the Barton Memorial Building.

AMERICAN LEGION AUXILIARY MEETINGS

Second Wednesday of every month at 4 p.m., at the Legion Hall in the Barton Memorial Building. For more information, call Patsy Tompkins at 525-6565.

AMERICAN LEGION NEWPORT POOL TOURNAMENT

The American Legion in Newport is holding an 8 Ball Pool Tournament on Mondays. 6 p.m. practice, 7 p.m. play. Double elimination, BCA rules. 8 players or less, pay two places; 9 players or more, pay three places. For more information, call 334-2374.

BARTON AREA SENIOR SERVICES, INC. (BASSI)

Located downstairs at the Barton Memorial Building. Meals will be served on Tuesdays and Thursdays at noon. Closed if schools are closed. Suggested donation of \$5 for people under 60 and \$4 for seniors, but no one is required to pay. Come early for coffee, cards, and conversation.

BINGO IN LOWELL

Bingo is held every Thursday at 6:30 p.m. at the St. Ignatius Hall on Hazen Notch Road in Lowell. Sponsored by the Troy and Area Lions Club. Progressive jackpot starting at \$500. Dinner available.

BOBBIN MILL PLAYERS MUSIC JAM SESSIONS

The Bobbin Mill Players will hold music jam sessions every Wednesday morning from 8 to 11 a.m. at the Lowell St. Ignatius Parish Hall. **Other music events include:** First Friday evening of the month at the Lowell Fire Station from 6:30 to 9:30 p.m.; Second Friday evening of the month at Lowell Church Hall from 6:30 to 9:30 p.m.; Second Sunday afternoon at the Glover Town Hall from 1 to 4 p.m.; Third Friday evening at the Charleston Elementary School from 6 to 9 p.m.; Fourth Friday evening at the Derby Line Town Hall from 6:30 to 10 p.m.; Fifth Friday evening (when there is a fifth Friday) at the Barton Memorial Building from 7 to 10 p.m. For more information, call Millie at 334-2598 or Lyle and Amy at 334-2419.

BONE BUILDERS BALANCING & STRENGTHENING CLASS

Bone Builders Derby is from 2 to 3 p.m. on Mondays and Thursdays at the Church of God on Crawford Road. Bone Builders Newport is from 10 to 11 a.m. on Tuesdays and Thursdays at the Municipal Building. Bone Builders Greensboro is from 10 to 11 a.m. on Mondays and Wednesdays at the United Community Church. There is also a class in Craftsbury from 10 to 11:30 a.m. on Mondays and Thursdays at the Craftsbury Community Care Center. For more information about Bone Builders classes, call the Northeast Kingdom Council on Aging at (802) 751-0431.

BRIDGE LEAGUES IN ORLEANS & NEWPORT

ORLEANS: Meets Mondays at 12:30 p.m. at the Orleans Federated Church on School Street. Come with a partner.

NEWPORT: Meets Wednesdays at 1 p.m. at the Gateway Center. Everyone must come with a partner. Learner's Group continues Wednesday mornings at 10 a.m. at the library in Newport, and all are welcome to drop in. For more information, or to find a partner, call Eric McCann at 988-4773.

CCV JOB HUNT HELPER TO OFFER CAREER SERVICES

Community College of Vermont (CCV) Job Hunt Helper is available at the Goodrich Memorial Library in Newport for six hours a week to offer career services to library patrons and job seekers. Find employment opportunities in the area, write a resumé and cover letter, apply for jobs online, assess skills and interests, use the Internet to explore career opportunities, and learn about education and training programs. Available on Tuesdays from 11:30 a.m. to 2:30 p.m. and Saturdays from 12 to 3 p.m., January 9 through May 22. For more information, call 334-7902.

COMMUNITY MEAL IN NEWPORT

A free Community Meal will be held the third Thursday of every month at noon, at the United Church of Newport on Third Street. All welcome.

COMMUNITY SEED EXCHANGE IN BARTON

The Community Seed Exchange (CSE), formerly called the Orleans County Seed Library, is opening for the 2018 gardening season on February 24, at the Barton Public Library. A variety of open-pollinated and heirloom seeds are available for home gardeners and homesteaders. The CSE is free and open to the public, and is open during library hours: Monday 1 to 7 p.m., Wednesday 9 a.m. to noon and 1 to 7 p.m., Friday 1 to 7 p.m., and Saturday mornings in the summer. For more information, visit the Facebook page or e-mail nekseeds@gmail.com.

CORNUCOPIA COMMUNITY/SENIOR MEAL IN NEWPORT

Cornucopia Community/Senior Meal will be served every Friday from noon to 1 p.m. at Cornucopia, 125 Main Street, #3 (rear door entrance off parking lot between Coventry and Center Streets). Come at 11 a.m. for cards, board games, or just to socialize and make new friends. Community members of all ages are invited to enjoy a warm, well balanced meal prepared by Cornucopia Culinary Trainees. For more information, contact Cornucopia at 487-9380.

COUNTRY ACOUSTIC JAM IN BURKE

There will be a Country Acoustic Jam held every third Sunday of the month from 1 to 4 p.m. at the Burke Community Building. Everyone with special musical or singing talents are encouraged to participate. Come to listen or join in on the fun. \$3 donation at the door. Door prizes and 50/50 raffle. All proceeds benefit the Burke Senior Meal Site. Snacks and beverages available. For more information, call Therese Stone at 525-3412 or the Senior Meal Site at 467-3423 or the Town Office at 467-3717.

CRAFTSBURY COMMUNITY SUPPERS

Members of the United Church of Craftsbury in Craftsbury Common will offer free evening suppers on the third Wednesday of each month at 6 p.m. Open to all. Donations appreciated but not required. For more information, call 586-8028.

DANCE AT BEEBE TOWN HALL

Come dance with us at the Beebe Town Hall in Beebe, Quebec, every Saturday from 7 to 11 p.m. Country western band. Also square dancing. Light refreshments and door prizes. For more information, call (819) 876-2021.

DIABETES SUPPORT GROUP MEETING

The Diabetes Support Group will meet on the third Thursday of every month from 5:30 to 7 p.m. in the meeting room at North Country Hospital in Newport. For more information or to confirm your presence, call Barbara Grant at 334-4155.

DO DROP IN MEAL SITE IN NEWPORT CENTER

The Do Drop In Meal Site at the Newport Center Fire Department on Cross Road is open on Mondays from 9 a.m. to 3 p.m. Games played before lunch, lunch at noon, bingo played after. For more information or reservations, call 334-6443.

EXPERIMENTAL AIRCRAFT ASSOCIATION

The EAA meets every first Monday of the month at 7 p.m. at the Caledonia County Airport in Lyndonville. All are welcome to attend. All that you need is an interest in aviation. Each meeting begins with a short business session where we discuss the minutes and reports from our chapter's previous meeting, plus our past and future events. We then move on to something educational, such as aircraft maintenance, safety, members' projects, or speakers and documentary movies from EAA Headquarters in Oshkosh, Wisconsin.

GRANDPARENTS 'N' KIN RAISING "GRAND" KIDS

Meets second Wednesday of the month from 5:30 to 7:30 p.m. at North Country Career Center, 209 Veterans Avenue, room 380, in Newport. For more information and to notify of your attendance, contact group leader Angela Blais at Head Start/Early Head Start by leaving a message at 525-3362, extension 201. Dinner provided. Childcare provided upon request.

"GROW YOUR OWN" GATHERINGS IN HARDWICK

Grow Your Own (GYO) gatherings will be held at the Center for an Agricultural Economy (CAE) in Hardwick from 11:30 a.m. to 1:30 p.m. on the first Saturday of each month and will include a shared meal. For more information and to reserve a spot, contact Ms. Dale-Brown at 472-5940 or e-mail ruby.dalebrown@gmail.com, or Bethany Dunbar at 472-5362, extension 214, or Bethany@hardwickagriculture.org.

IMMUNIZATION CLINIC IN NEWPORT

Fourth Tuesday of every month from 10 a.m. to 4 p.m., at Department of Health in Emory Hebard State Office Building at 100 Main Street, Suite 220, in Newport. Free. Walk in or call for an appointment at 334-4386. All childhood vaccinations are offered. Adult immunizations included are: Hepatitis A and B, Pneumococcal, Tdap, Tetanus, and Measles.

JAY COMMUNITY RECREATIONAL CENTRE

Located on Cross Road in Jay. Open to all area residents and visitors for free cross-country skiing, snowshoeing, and hiking in the winter, and mountain biking, hiking, and walking in the summer. Link to site map at www.jayvt.com and topofvt.com under discover/map. Site maps available locally in Jay and at Jay Town Clerk's Office. User guidelines: Please leave no trace in this special place. Pack it in, pack it out. Leash your dog, bury dog waste away from trails. Respect other users. No motorized vehicles. No fires of any kind. As this is a big hunting area, it is advisable to wear orange. Enjoy at your own risk!

JOURNEY TO RECOVERY COMMUNITY CENTER

Located at 58 Third Street in Newport. **Making Recovery Easier** meets Tuesdays from 10 to 11:30 a.m. **Art Group** meets Tuesdays from 2:30 to 4 p.m. **All Recovery** meets Thursdays from 2 to 3 p.m. For more information, e-mail Kathlene.Douglas@gmail.com or Kathlene.journey2recovery@gmail.com.

LINE DANCING IN WEST BURKE

Line dancing is held in West Burke at the meal site on the first and third Wednesdays of each month from 1 to 3 p.m. Everyone welcome. \$3 donation. For more information, call Therese Stone at 525-3412.

LINE DANCING IN DERBY

Maureen Profera will be teaching line dancing classes at the Dailey Memorial Library in Derby on Wednesdays at 1 p.m. Classes are free and open to the public. Please call the library at 766-5063 to register.

LINE DANCING IN TROY

Line dancing classes for exercise and enjoyment are held every Wednesday from 6 to 7 p.m. at the Catholic Church Parish Hall, 130 South Pleasant Street, in North Troy. No partner needed and all levels of experience are welcome. If you can count to four, you can line dance! \$5 per person. For more information, call Pat Sanders at 988-4193.

NARCOTICS ANONYMOUS MEETING IN HARDWICK

Every Wednesday night at 7 p.m. at Saint John the Baptist Episcopal Church on West Church Street in Hardwick. All are welcome. NA is for people who wish to try our program of complete abstinence from all drugs. This includes alcohol on an equal status with opiates or cocaine. The disease is addiction, not specific to any one particular drug. For more information, call 535-5042.

NARCOTICS ANONYMOUS MEETING IN NEWPORT

Narcotics Anonymous meetings are on Tuesdays and Thursdays at 7 p.m. On Tuesday the location is North Country Hospital located at 189 Prouty Drive in Newport in the surgery waiting room on the main floor of the hospital. On Thursday the location is the Church of God at 295 Crawford Road in Derby. Enter through the main front doors of the church. For more information, call 895-4757.

NEWPORT AREA COMMUNITY ORCHESTRA

The Newport Area Community Orchestra has openings for violin, cello, clarinet, oboe, French horn, and trombone. We are a growing and well-established community orchestra located in the NEK of Vermont. The orchestra plays two concerts each year, one in the fall and one in the spring. For more information, please contact us at 766-3021 or www.newportareacommunityorchestra.org. Rehearsals are on Tuesday evenings from 6:30 to 8:30 p.m. at the First Universalist Parish in Derby Line.

Jay Village Inn *Good Food. Great Spirits.*

Restaurant & Inn

Restaurant & Gathering

802-988-2306

1078 Rte. 242
Downtown Jay, VT

Guest Rooms:
802-988-2306

Direct access to the VAST trail!

www.thejayvillageinn.com **LODGING AVAILABLE!**

JOIN US FOR BREAKFAST, LUNCH & DINNER, 7 DAYS A WEEK!

Dine in or take out.

- HOMEMADE PIZZA
- BURGERS • PASTA
- J.R.'S FAMOUS RIBS
- FRESH SEAFOOD
- HAND-CUT STEAKS
- DAILY SPECIALS

Something for every palate!

CROSSWORD PUZZLE ANSWER

M	A	M	M	A	L	S			A	R	A	B	S							
O	V	E	R	S	E	E			B	A	D	E	N							
P	E	R	S	P	I	R	A	T	I	O	N		M	I						
P	R	C				R	I	O	T	S		R	I	P						
E	S	E				A	R	A	S		P	A	R	E						
D	E	R	O	G	A	T	E	D		S	A	N	E	R						
						R	A	L	E	S		S	A	L	A	D	S			
						A	W	E	D		R	O	G	E						
P	R	A	N	K	S					D	E	L	E	S						
L	E	G	G	Y						R	E	P	O	R	T	A	G	E		
A	G	E	E							R	E	E	L				F	R	A	
C	U	D				S	H	A	R	I								F	O	R
A	L					D	E	P	R	E	C	I	A	T	I	O	N			
R	A	C	E	S								A	L	G	A	R	V	E		
D	R	A	B	S								S	L	A	M	M	E	D		

"Beyond the Red Gate"
Main Street
Newport, VT

JASPER'S
TAVERN

Open 7 days
a week at 11 a.m.
334-2224

Friday, February 2: WOUND FOR SOUND
Saturday, February 3: DJ LOUD

We are open Super Bowl Sunday, Feb. 4: 11 a.m.-closing!

MORGAN

COUNTRY STORE

AT SEYMOUR LAKE

New owners: Julie Jacobs-Seguín & Libby Jacobs
OPEN: Mon.-Wed. 6 a.m.-8 p.m., Thurs.-Sat. 6 a.m.-9 p.m., Sun. 8 a.m.-6 p.m.

8411 VT RTE. 111, MORGAN, VT • (802) 895-2726

A real country store!

FULL DELI ALL DAY!
Eat in or takeout.

Under new ownership!

Groceries
Gas
Wine
Beer
Gifts

THE KINGDOM CALENDAR



STRICT DEADLINE FOR EVENTS: MONDAY AT NOON. We reserve the right to reject or edit events. We do not take events over the phone. E-mail events to ads@bartonchronicle.com

NORTH COUNTRY QUILTERS

Regular monthly meetings are held the first Tuesday of every month at 6:30 p.m., at the Church of God on Crawford Road in Derby. New members are welcome.

NORTHEAST KINGDOM COMMUNITY ACTION ASSISTANCE

Available to help with forms, photocopies, faxes, phone assistance, fuel/electrical assistance, food shelf and commodities, Farm to Family coupons, holiday meals, seed packets, housing, temporary shelter, housing advocacy, and 3Squares applications.

NEWPORT: 70 Main St., Newport, VT 05855. 334-7316. Hours: Monday through Friday, 8 a.m. to 4:30 p.m.

ISLAND POND: 70 Cross St., Island Pond, VT 05846. 723-6425. Hours: Tuesday 10 a.m. to noon.

ST. JOHNSBURY: 115 Lincoln St., St. Johnsbury, VT 05819. 748-6040. Hours: Monday through Friday 8 a.m. to 4:30 p.m.

OSTEOPOROSIS EDUCATION & SUPPORT GROUP

The National Osteoporosis Foundation Better Bones of the Northeast Kingdom group meets on the first Saturday of most months, at 1 p.m., in the Community Room at the Community National Bank in Derby (accessed from Crawford Road). Free and open to the public. All welcome. Refreshments. Learn from a variety of guest speakers and medical specialists. To register or for more information, contact Mary King, RN, BSN, at 535-2011 or Mary@BetterBonesNEK.org, or visit www.BetterBonesNEK.org.

OVEREATERS ANONYMOUS MEETING

Overeaters Anonymous (OA) offers a 12-step program of recovery for the physical, emotional, and spiritual aspects of compulsive eating. Derby meeting Saturdays from 10 to 11 a.m., at Derby Community National Bank training center on Crawford Road (behind the bank). Big Book study meeting follows from 11:15 a.m. to noon. For more information, call 673-5621.

PRO BONO (FREE) LEGAL CLINIC IN NEWPORT

Pro bono (free) legal clinic monthly at Orleans County Restorative Justice Center, usually the first Wednesday of each month. Free consults with lawyer. Best for landlord-tenant, housing, probate, elder law, custody, family law, etc. issues. No criminal law. Advance appointments only by calling (802) 487-9293. \$10 fee for people living outside Orleans County. Mediation services are also available. For more information, visit www.kingdomjustice.org.

RSVP BONE BUILDING & STRENGTHENING CLASSES

Offered twice a week: at the Jay Community Center on Tuesdays from 10:30 to 11:30 a.m. and at the Westfield Community Center on Thursdays from 10:30 to 11:30 a.m. A free exercise class to prevent or reverse osteoporosis. Classes consist of a variety of exercises to improve balance and increase strength. Participants start out using very light weights which are gradually increased as strength develops. Weights provided. For more information, contact Maureen McGuire at 334-7746 or mamcguire77@gmail.com.

SENIOR DINING AT DERBY ELKS CLUB

Derby Senior Meals are held at noon every second Thursday at the Elks Lodge #2155 on the Newport-Derby Road in Derby. By donation. For more information, call the Northeast Kingdom Council on Aging's nutrition coordinators Jenny Patoine or Lallie Mambourg at 748-5182.

SENIOR DINING IN GLOVER

Lunch is served at noon on Mondays and Tuesdays on the lower level of the Glover Town Hall, 3018 Glover Street. Suggested donation by seniors is \$3.50; for those younger than 60, \$5. For more information, call the NEK Council on Aging's Nutrition Coordinator Lallie Mambourg at 1-800-642-5119.

SOUPER LUNCH AT ST. MARK'S IN NEWPORT

St. Mark's Episcopal Church on Second Street in Newport holds a free community Souper Lunch from noon to 1 p.m. on the last Tuesday of every month. All are welcome.

SQUARE DANCING IN BARTON

Square dancing will be held every Thursday from 1 to 3 p.m. at the Barton Senior Center. Judy Clifford will be the caller/instructor. Call 525-4400 for more information.

STAMP CLUB IN NEWPORT

The Memphremagog Stamp Club meets on the second and fourth Wednesday of every month from 7 to 9 p.m. at CALLICO, 326 Bluff Road, Newport. All stamp collecting interests are welcome. For more information, call 334-6001.

SURVIVORS OF SUICIDE SUPPORT GROUP

Third Thursday from 5:30 to 7:30 p.m. at Nevermore Bookstore on 100 East Main Street in Newport. A support group for those who have lost someone to suicide and wish to have a safe place to talk, share, and spend a little time with others who have had a similar experience. For more information, call Mary Butler at 744-6284.

TAI CHI CLASSES (FREE)

Free one-hour Tai Chi classes held throughout the Northeast Kingdom taught by RSVP (Retired Senior Volunteer Program) Volunteers through the NEK Council on Aging:

Fall Prevention Tai Chi – Dailey Memorial Library in Derby on Tuesdays at 12:30 p.m.; Poulin Building in North Troy on Wednesdays at 10:30 a.m.; Sunrise Manor in Island Pond on Fridays at 10 a.m.

Golden Ball Tai Chi – St. Johnsbury House on Mondays and Thursdays at 8:30 a.m.; First Congregational Church of Lyndonville on Tuesdays and Fridays at 8:30 a.m.; Danville Methodist Church on Wednesdays at 10 a.m.

For more information and to register, call Karen Budde at (802) 751-0431.

TAI CHI IN BARTON

Leader Brenda Lowther is teaching Tai Chi for Arthritis and Falls Prevention at the Barton Senior Center on Tuesdays and Thursdays at 9 a.m. The Arthritis Foundation Thai Chi Program, developed by Dr. Paul Lam, uses gentle Sun-style Tai Chi routines that are safe, easy to learn, and suitable for every fitness level. For more information, call 525-4400.

TOPS MEETING AT IN BARTON

TOPS VT #82 Barton meets every Monday at Mountain View Apartments Community Room. A fun, informative way to learn how to take off pounds sensibly. Weigh-ins, 5 to 5:45 p.m.; meetings, 5:45 to 6:30 p.m. First meeting is free! For further information, call 525-3173.

TOPS MEETING AT ISLAND POND PUBLIC LIBRARY

TOPS VT #135 Island Pond meets every Monday at Island Pond Public Library. Weigh-ins from 4:30 to 4:45 p.m.; meeting from 4:45 to 5:30 p.m. For further information, call Bev at 723-5907 or e-mail tombusa@hotmail.com.

VAN SERVICE FROM WESTMORE TO BARTON

Every first and third Tuesday of each month there will be van service from Westmore to Barton. 10:30 a.m. pickup at the old Town Clerk's office; 1:30 p.m. return trip to Westmore. Free to residents age 60 or older. For more information, call Mary at 525-4128 or the Area Agency on Aging at 334-2190.

VAN SERVICE TO SENIOR MEALS IN BARTON

Every Thursday there is van service to senior meals in Barton. The pickup schedule is as follows: 11:25 a.m., Mountain View Apartments; 11:30 a.m., Congress Court; 11:35 a.m., Monitor Manor; 11:40 a.m., Hillcrest; 11:45 a.m., Memorial Building; 11:50 a.m., Park Street trailer park. For more information, call Brenda Sargent at 525-4400.

WESTFIELD COMMUNITY MEAL SITE

Every Thursday at noon at the Westfield Community Center (North Hill Road/School St.). Suggested donation \$4 with the 2nd Thursday of the month free. Following lunch, join the fun and play Bingo! Sponsored by the Troy and Area Lions Club. For more information, call 744-2484.

LIBRARY ACTIVITIES

****PLEASE SUBMIT CORRECTIONS OR DELETIONS IF YOUR LISTING NEEDS UPDATING TO ADS@BARTONCHRONICLE.COM**

ALBANY TOWN LIBRARY

Located on Route 14 in the back of Albany Town Hall on Main Street. Open Tuesdays and Thursdays from 12 to 4:30 p.m. For more information, call 755-6107.

BARTON PUBLIC LIBRARY

100 Church Street, Barton. 525-6524. Open Mondays from 1-7 p.m., Wednesdays from 9 a.m.-12 p.m. and 1-7 p.m., Fridays 1-7 p.m., Winter Friday Afternoon Classic Movies, Friday Night Movies, Friday Evening Potlucks. Scrabble Players meet 1st and 3rd Wednesdays year-round. Book Discussions are January through May. Wednesday After-School Programs: Fall, Winter, Spring. Call for programs and events for children.

CRAFTSBURY PUBLIC LIBRARY

Church Lane, Craftsbury Common. 586-9683. craftsburylibrary@gmail.com. www.craftsburypubliclibrary.org. Hours: Tuesday, 10 a.m.-8 p.m.; Wednesday, 9 a.m.-noon; Thursday, 2-6 p.m.; Friday, 10 a.m.-8 p.m.; Saturday, 9 a.m.-noon; and Sunday, 11 a.m.-1 p.m. **Friday Story Time:** 10 a.m., up to age 6. **Friday Lego Club** for children 5 to 12 years old, 3-4:30 p.m. **Story Hour:** for children birth to 5 years and families on Tuesdays at 10 a.m.

DAILEY MEMORIAL LIBRARY

101 Junior High Drive, Derby Center. Hours: Tuesdays and Fridays from 10 a.m. to 6 p.m., Wednesdays and Thursdays from 10 a.m. to 5 p.m., and Saturdays from 10 a.m. to 3 p.m. Story Time is Tuesday mornings from 10:30 to 11:30 a.m. Trustee meetings last Wednesday of the month at 6 p.m. Tai Chi classes Tuesdays at 12:30 p.m. Line Dancing Classes with Maureen Profera on Wednesdays at 1 p.m. Free and open to the public. Call the library to register. For more information, call the library at 766-5063, visit www.daileymemoriallibrary.org or check Facebook page.

GLOVER PUBLIC LIBRARY

51 Bean Hill Road, Glover. 525-4365. Open Tuesday, Wednesday, Thursday 1-6 p.m., Saturdays (December-April) 10 a.m.-12 p.m. Tuesday Play Group and Story Time (Fall, Winter, Spring) 9:30-11 a.m. at the Glover Town Hall.

GOODRICH MEMORIAL LIBRARY

202 Main Street, Newport. 334-7902. www.goodrichlibrary.org. Hours: Monday through Friday, 10 a.m. to 6 p.m. Saturday, 10 a.m. to 3 p.m. **Board of Trustees** meeting monthly, Tuesdays at 2 p.m. **Book discussion group** held third Thursday of each month at 1 p.m. **Job Hunt/Computer Help** with CCV student on Tuesdays, 11:30 a.m. to 2:30 p.m., and Saturdays, 12 to 3 p.m. from January 9 to May 22. **Story Time:** Tuesday mornings at 11 a.m.

We can hardly wait for the... ...competitions and events to begin. Kids: color stuff in!

Newspaper Fun!

www.readingclubfun.com Animills LLC © 2018 V15-2

Getting Ready For the 2018 Winter Games

PyeongChang, South Korea is the host for the 2018 Winter Olympics. People there have been getting ready to welcome over 2,500 world-class athletes from about 88 countries for the sporting competitions. After the exciting Opening Ceremony on Friday, February 9th, athletes will be competing for gold medals in 102 exciting events. What do **you** know about the host country, South Korea?

Read the clues below to fill in the puzzle and learn more about South Korea:

- South Koreans use _____ chopsticks instead of wood or bamboo – they say that they are easier to clean and helpful to the environment
- warm and tasty _____ is a popular dish; served as a main course
- students go to elementary school for only 5 _____ a day; classes are hard
- soccer and _____ are popular sports
- video _____ are very popular; millions of people tune in on T.V. to watch professional gamers compete in games (like *StarCraft* and *League of Legends*)
- many _____, (even *McDonalds*), will deliver food right to your door
- in South Korean culture the number 4 is _____; it isn't used in elevators
- the national dish is _____ – fermented vegetables and spices
- over 80% of students go to private after-school _____ called "hagwon"
- K-pop* is a _____ style where performers dance and sing in interesting costumes
- the _____ art of Taekwondo is an Olympic sport; it originated in South Korea
- South Koreans celebrate 'White Day,' a _____ like Valentine's Day with a twist – the girls give chocolates to boys
- the 3 bodies of water along the _____ of South Korea are: the Yellow Sea, the Korea Strait and the Sea of Japan
- _____ is the capital of South Korea
- South Korea is very "green", with over 60% of its land covered in _____

PyeongChang – Getting Ready for Visitors!

The people of PyeongChang had to spend a lot of time thinking about how they would get the city and surrounding area ready to host thousands of people. A new Olympic Park needed to be built. What else did the hosts have to think about?

Read the clues to fill in the crossword:

- a plan to keep all the visitors and athletes _____; the stadium where the Opening and Closing Ceremonies will be held has no roof, so people may need heaters and blankets
- transportation, so they built a new high-speed _____ line to help people get around and to connect with the airport
- a _____ for each new building, (the games are set to cost \$30 billion less than the last Winter Olympic Games)
- making sure that each village would have a _____, laundromat, general store, bank, post office and recreation center
- communications: phones, radio, _____
- how the _____ and other new things would be used after the games are done
- making sure they would have enough mattresses for everyone to _____ on
- kinds of _____ the athletes from different countries would eat
- construction of 3 villages: one on the _____ and one in the mountains for the athletic teams, and one just for the media to use during the games
- languages being spoken – taxi drivers are learning English, while restaurants are printing their _____ in Chinese, English and Japanese

Who Are We? Mascots and National Symbols!

1. I eat both plants and meat, making me an 'omnivore'.

2. My strong hind legs help me walk on two feet when I need to reach up high.

3. My scientific name is *Ursus tibetanus*.

4. I have a patch of "gold" fur between my neck and chest.

#1

Who am I? Asiatic _ _ L _ _ _ K _ B _ _ _ R

These two animals were chosen as mascots for the 2018 Winter Olympic Games. What are they?

#2

1. My fur is a snowy white, because of a gene only found in 1 out of 15,000 of us!

2. I am almost never seen in the wild

3. My scientific name is *Panthera tigris*.

Who am I? _ _ _ _ I _ _ _ _ G _ _ _ R

I am not a mascot, but I am a favorite bird all over the country. Who am I?

#3

1. scientists trace my species back 15,000 years

2. I am related to crows

3. I have bluish feathers, with white stripes on my wings

Who am I? M _ P _ E _ _ _ G _ _ _ I _ _

Who is Visiting?
athletes judges
trainers family
reporters spectators

Created by Animills LLC © 2018

THE KINGDOM CALENDAR

STRICT DEADLINE FOR EVENTS: MONDAY AT NOON. We reserve the right to reject or edit events. We do not take events over the phone. E-mail events to ads@bartonchronicle.com

GREENSBORO FREE LIBRARY

53 Wilson Street, Greensboro. 533-2531.
greensborofree@yahoo.com, www.greensborofreelibrary.org Librarian Mary Metcalf. Hours: Sundays 11:30 a.m. to 1:30 p.m.; closed Mondays; Tuesdays from 10 a.m. to 7 p.m.; closed Wednesdays; Thursdays and Fridays from 10 a.m. to 5 p.m., and Saturdays from 10 a.m. to 2 p.m. **Story Hour for Children:** at Four Seasons Learning, Fridays at 10 a.m.; **Story Time** for ages 0-6 every Thursday at 10 a.m.; and for ages 6-12 every Tuesday at 10 a.m.

HASKELL FREE LIBRARY

93 Caswell Avenue, Derby Line. Hours: Tuesday, Wednesday, and Friday from 9-5, Thursday 9-6, and Saturday 9-2. Board of Trustees meets the third Wednesday of the month at 6:30 p.m. Toddler Time on Thursdays and Fridays at 9:45 a.m. For more information, call Nancy at 873-3022, extension 201, or check the website at haskellopera.com/library-activities, or find them on Facebook.

HITCHCOCK MEMORIAL LIBRARY AND MUSEUM

1252 VT Route 100, Westfield. 744-2484. Visit the Hitchcock Museum/Library page at www.westfield.vt.gov and on Facebook at Town of Westfield, Vermont for up-to-date activity listings.

ISLAND POND PUBLIC LIBRARY

Main Street. Hours: Tuesday, 10 a.m.–7 p.m.; Wednesday, 2–6 p.m., Thursday, 10 a.m.–7 p.m., Friday, 10 a.m.–5 p.m., and Saturday, 10 a.m.–2 p.m. **Story Time** every Saturday at 10:30 a.m. For further information, call 723-6134 or look on Facebook.

JEUDEVINE MEMORIAL LIBRARY

93 North Main Street; P.O. Box 536, Hardwick. 472-5948.
www.jeudevinememoriallibrary.org. Hours: Monday and Wednesday, 1–7 p.m.; Tuesday and Thursday, 1–5 p.m.; Friday, 10 a.m.–5 p.m.; and Saturday, 10 a.m.–2 p.m.; closed Sunday. All programs are free and open to the public. For more information, please call the library at 472-5948 or visit jeudevinememoriallibrary.org.

JOHN WOODRUFF SIMPSON MEMORIAL LIBRARY

1972 East Craftsbury Road, East Craftsbury. 586-9692. Open Sunday, noon–1 p.m.; Wednesday and Saturday, 9 a.m.–noon, 2–5 p.m.

JONES MEMORIAL LIBRARY

1 Water Street, Orleans. 754-6660. Hours: Monday, 10 a.m.–8 p.m.; Wednesday, Friday & Saturday, 10 a.m.–5 p.m.; Closed Sunday, Tuesday, and Thursday. Handicapped accessible. **Story Time:** Mondays at 11 a.m. and 5 p.m. **Board Meetings:** 3:30 p.m. on the second Monday of every month. www.jonesmemoriallibrary.wordpress.com

LEACH PUBLIC LIBRARY

Irasburg. 754-2526. Hours: Monday, 3–8 p.m.; Wednesday and Thursday, 3–6 p.m.; and Saturday 10 a.m.–4 p.m. Story Hour for children on Fridays at 10 a.m. (October 6–May 31 when school is in session).

RAND MEMORIAL LIBRARY

160 Railroad Street, North Troy. Hours: Monday & Wednesday 5-8 p.m., Thursday & Friday 8 a.m.-3 p.m., Story Time on Fridays at 10 a.m. www.randmemorial.com.

WEST BURKE PUBLIC LIBRARY

135 Main Street (5A), next to the park. Hours: Saturday 1-4 p.m. For further information, call (201) 519-3633. www.westburkepubliclibrary.wordpress.com or on Facebook at www.facebook.com/westburkelibrary.

ART GALLERIES, HISTORICAL SOCIETIES & MUSEUMS

****PLEASE SUBMIT CORRECTIONS OR DELETIONS IF YOUR LISTING NEEDS UPDATING TO ADS@BARTONCHRONICLE.COM**

ALBANY HISTORICAL SOCIETY & MUSEUM

The Albany Historical Society is located in the old village school on Route 14 across from the Methodist Church, and is open by appointment. Contact Jim Oliver at falco43@gmail.com, or Paul Daniels at the Diamond Heart Farm in East Albany for an appointment.

BREAD AND PUPPET MUSEUM

One of the largest collections of some of the biggest puppets and masks in the world is located at 753 Heights Rd. (Route 122) in Glover (off Route 16 and I-91 exits 24/25), and is open by appointment. Visit www.breadandpuppet.org or call (802) 525-3031 or 6972 for more information.

BROWN LIBRARY GALLERY

At Sterling College, Craftsbury Common. 586-7711, extension 129. Open Monday through Friday, 9 a.m.–4 p.m. Exhibit *Plowing Old Ground*. For more information, visit www.VermontArtHouse.org/openings or call 586-2200.

CATAMOUNT ARTS CENTER

115 Eastern Avenue, St. Johnsbury. Masonic Temple building. 748-2600. www.catamountarts.org. Open Monday through Friday, 1–6 p.m. and before and after each movie screening. Gallery is always open to the public free of charge. Artists wanted for Juried show. Selected works will be on display until February 16. Visit catamountarts.slideroom.com for more info.

CHARLESTON HISTORICAL SOCIETY

For information, call 723-6024 or 895-2901.

CHUCK GUEST GALLERY

Featuring over 130 paintings of abstract imagery. Located at 205 Vermont Route 114 in East Burke. Open Monday through Friday, 8 a.m. to 5 p.m., and Saturdays from 9 a.m. to 1 p.m. For more information, call 626-9011 or visit www.chuckguest.com.

COLBY CURTIS MUSEUM & STANSTEAD HISTORICAL SOCIETY

535 Dufferin Street, Stanstead, Quebec. 1-819-876-7322. Two exhibitions: *Remembering our Soldiers of the Great War* and *Rural Medicine in Stanstead County*.

CRAFTSBURY COMMUNITY CARE CENTER GALLERY

1784 East Craftsbury Road, East Craftsbury. 586-2414. www.craftsburycommunitycarecenter.org. The work of fine artist Elsie Andreas is on display until the end of February.

FAIRBANKS MUSEUM

1302 Main Street, St. Johnsbury. 748-2372. www.fairbanksmuseum.org. Open seven days, 9 a.m. to 5 p.m.

GLOVER HISTORICAL SOCIETY MUSEUM

Bean Hill Road in Glover, second floor in Municipal Building. www.gloverhistoricalsociety.org. Open by appointment only: Call Joan at 525-6212 or Randy or Betsy at 525-4051.

GRACE GALLERY

Old Firehouse, 59 Mill Street, downtown Hardwick. 472-6857. www.graceart.org. Gallery hours are Monday through Thursday, 10 a.m.–4 p.m. **Community Workshops** are held weekly on Tuesday, Wednesday, and Thursday, and are open to all community members.

GREENSBORO HISTORICAL SOCIETY

29 Breezy Avenue, Greensboro (building next to Willey's Store), 533-2457. www.greensborohistoricalsociety.org. Check out our powerful new tool for researching Greensboro families stored in our archives! **Permanent Exhibit:** *Hill Homestead: The Story of Greensboro: Faces of Our Town* has been updated and displays tools and ledgers, kitchen gadgets, and farm implements, and parlor furniture from the 19th century.

HIGHLAND CENTER FOR THE ARTS

2875 Hardwick St., Greensboro. 533-9075 or www.highlandartsvt.org. 64 works by Elizabeth Nelson inspired by the 64 hexagrams of the I Ching, on display through February 18.

JANE'S CAFÉ AND GALLERY

43 Main St. (Rte. 5), Derby Line. Open Wednesday through Sunday, 8 a.m. to 2 p.m. featuring comfort food and artists of the Northeast Kingdom. The paintings of Jan Ghiringhelli; oils and pastels, plein air and studio paintings.

MAC CENTER FOR THE ARTS

158 Main Street, Newport. 334-1966. Hours: Monday through Saturday from 10 a.m. to 5 p.m. Over 45 Vermont visual artists and handcrafters offer their work in the 2,000+ square foot gallery. MAC Center for the Arts also offers special events, exhibits, musical performances, and classes/workshops for adults and children. Visit www.memphremagogartscollaborative.com.

MEMPHREMAGOG HISTORICAL SOCIETY OF NEWPORT

Second floor of Emory Hebard State Office Building, Main Street, Newport. Open Monday through Friday, 9 a.m.–4 p.m. Showcasing Newport's forever changing history and landmarks. **FIRST SHOWCASE EXHIBIT:** "Keeping the Memphre Legacy Alive in the Years Yet to Be." **SECOND SHOWCASE EXHIBIT:** "Celebrating 100 Years of Remembering 'The Lady of the Lake's' Last Days – (1917-2017) here at Steamboat Wharf in Newport."

NATIVE AMERICAN MUSEUM (NATIVE CULTURAL SOCIETY, INC.)

56 Church Street in Newport Center. 334-6770. Open from 11 a.m.–6:30 p.m., closed Mondays. No admission fee.

NEWPORT NATURAL CAFÉ GALLERY

194 Main Street, Newport. 334-2626. Monday through Saturday, 8 a.m.–8 p.m., and Sundays from 10 a.m.–6 p.m. Paintings by Seattle artist Donald Peel (1921-2010) will be on view and for sale through January, with all proceeds from the sale going to the Newport Wireless Mesh Project, a nonprofit which will provide community supported wireless mesh Internet access to Newport's low income residents.

NORTHEAST KINGDOM ARTISANS GUILD (BACKROOM GALLERY)

430 Railroad Street, St. Johnsbury. 748-0158. www.nekartisansguild.com. Hours: Open Monday through Saturday, 10:30 a.m. to 5:30 p.m. The Enigmatic Art of Charles Trotsky on display in the Back Room Gallery until February 24.

OLD STONE HOUSE MUSEUM (ORLEANS COUNTY HISTORICAL SOCIETY)

109 Old Stone House Road, Brownington. 754-2022. info@oldstonehousemuseum.org. www.oldstonehousemuseum.org. Museum is open closed for the season. The Alexander Twilight Visitors' Center and gift shop are open year-round. Wednesday–Sunday, 11 a.m.–5 p.m. Closed Monday and Tuesday. Craft Circles (all welcome!); **Quilter's Circle** meets the fourth Wednesday of every month from 1 to 3 p.m.

PARKER PIE GALLERY

West Glover Village. Exhibiting works by local artists. New Landscape Paintings by Gerry Trevis in display until March 8.

PLEASANT VALLEY ART GALLERY

146 White Road, Irasburg. 754-2000. Open Saturdays and Sundays from 10 a.m. to 4 p.m or call for an appointment anytime.

THE 99 GALLERY AND CENTER

The 99 Gallery and Center on School Street behind 316 Main Street in downtown Newport. Work by Northeast Kingdom artists, free classes, movies and community events. Open most afternoons till 5 p.m. 323-7759. Whimsical sculptures and drawings by Newport's Manfred Rieder now on display.

THE THIRD FLOOR GALLERY

Hardwick Inn, 4 South Main Street, Hardwick. Call 472-9933 for information. Paintings by Ben Barns on display through March.

THE MUSEUM OF EVERYDAY LIFE

3482 Dry Pond Road (Route 16) in Glover (short distance south of Shadow Lake Road). Clare Dolan: 626-4409. www.museumofeverydaylife.org. New Exhibit: "Bells and Whistles" on display now. Admission by donation. Self-service museum, open every day from 8 a.m. to 8 p.m.

THE VIEUX FORGERON ART GALLERY

240a Dufferin St., Stanstead, Quebec. All are welcome! Hours: Thurs.–Sun. 11 a.m.–6 p.m. www.levieuxforgeron.com

WHITE WATER GALLERY

5 River Street by the bridge, East Hardwick Village. Open Sundays from 11 a.m.–3 p.m. or by appointment. Call Watergate at 563-2037. <http://whitewatergallery.blogspot.com>.

WONDERARTS (ART HOUSE GALLERY AND WONDER & WISDOM)

The Art House Gallery and Wonder & Wisdom have merged to create WonderArts. Office located at the UCC, 165 Wilson St., Greensboro and programs are held at the Wonder & Wisdom program space, Community Greenspace in Craftsbury, Craftsbury Town Hall, local schools, Craftsbury Masonic Hall, and in partnership with other community organizations. For more information, call 533-9370 or visit www.wonderartsvt.org.

WOODEN HORSE ARTS GUILD (WHAG)

P.O. Box 502, North Troy 05859. 988-4300. www.woodenhorsearts.com. Wooden Horse Arts Guild is a 501c3 charitable organization composed of artists, crafters, writers, photographers, and musicians who live and work throughout Vermont and beyond. They support and encourage artistic excellence in the literary, visual, and performing arts. Their virtual gallery gives members an individual web page on www.woodenhorsearts.com. To read the news of members and arts around the area, visit <http://blog.woodenhorsearts.com> and Like them on Facebook. President: Peggy Loux, 343-5687. Past President: Camilla Mead, 988-4300. E-mail: woodenhorsearts@gmail.com.

YE OLD BLACKSMITH ART GALLERY

240 A Dufferin, Stanstead, Quebec. (819) 876-2282. Open Thursday through Sunday, 11 a.m. to 6 p.m. In the heart of Rock Island in the historical Ye Olde Blacksmith overlooking the Tomifobia River. This historical blacksmith shop is now a cozy gallery featuring a variety of works from numerous local artists. www.levieuxforgeron.com

SUBSCRIBE NOW!

Let The News Come To You!!

An annual subscription to **the Chronicle** costs:
 \$27 — In Vermont
 \$40 — Out of State
 \$33.50 — Half in Vermont/
 Half Out of State

Bundle it!
 Add \$10 for one year access to online edition with purchase of regular subscription (see form to the right).
 Cut out the form at right and send to:

the Chronicle
 P.O. Box 660
 Barton, VT 05822

PLEASE SEND A ONE-YEAR SUBSCRIPTION TO:

Name: _____

Address: _____

City: _____ State: _____ Zip: _____

Is this a new subscription or a renewal? I've enclosed an additional \$10 for online access.

My e-mail address to set up online access is: _____

I, the payer, am 65 years or older and am eligible to deduct a \$2 SENIOR CITIZEN DISCOUNT from the above amount for a 1-year subscription.

Date subscription should start: ____ / ____ / ____.

Check enclosed for \$ _____. Please bill my credit card. MasterCard Visa

Account # _____ Exp. Date: ____/____/____ Sec. Code: _____

Signature: _____ Your phone number: _____

IF THIS IS A GIFT SUBSCRIPTION, PLEASE FILL OUT THIS SECTION:

Giver's Name: _____

Address: _____

City: _____

State: _____ Zip: _____

Would you like a gift card sent to this person? Yes No

If yes, how would you like us to sign it?



the Chronicle Classifieds



Deadline is 12 noon on Mondays • 802-525-3531 • E-mail: ads@bartonchronicle.com

SERVICES

TELEPHONE- jack & wire installation and repair. Reasonable rates. 45 years experience. Call Larry at 802-334-5301. Ex. 5/16

MOVING?- Need a delivery? We can help. 30+ years of moving experience. Let our small box truck & trailer work for you. Local & regional. 802-334-1863, 802-673-6282. Ex. 3/14

SENIOR CARE- provider seeking assignment. 10 years experience with Alzheimer's/Dementia. Companionship, light housekeeping, personal care, respite care. Hourly, daily, overnights. 802-715-1000. Live in Lowell. Ex. 2/28

STILLWATER TIMBER- A one-man, low-impact operation specializing in selective timber harvesting. Hardwood, softwood, cedar wanted!! Top prices paid. 525-6659, 673-3451. Ex. 2/14

FACE PAINTING SERVICES- available for parties & events by professional artist. Text 624-1339 or e-mail colorfulfaces@outlook.com for rates. Facebook: Colorful Faces by Brienne. >

TOTAL SECURITY- Keys, locks & safes. Free estimates. Ken or Adam Johnson at 754-8417. E-mail totalsecurityvt@gmail.com, website: www.totalsecurityvt.com. Ex. 12/21/18

LOSE SOMETHING METAL?- Metal detector man will find it for you. Call 525-3944. >

PLOWING/SANDING

PLOWING & SANDING- Roof shoveling, snow blowing, walkways. 802-766-8847, cell 802-324-7573. Ex. 3/14

HOME MAINTENANCE & REPAIR

BATH TUB RESCUE- Specializing in removal of hard water scale & stains, \$150. Satisfaction guaranteed. 802-624-6721. Ex. 2/14

PROFESSIONAL PAINTING- Interior/exterior painting. Residential or commercial. Over 25 years experience. Varnish, paint or stain. Jobs of all sizes. For information or to set up free estimates, call 802-673-7178 or 802-323-6235. Ex. 2/28

YOUNG'S GENERAL MAINTENANCE- Apartments, homes & camps. Experience in masonry, carpentry & painting. No job too small. Phone anytime, 525-3960. >

HOME & BUILDING MATERIALS

STAINLESS-STEEL CHIMNEY- 3 full length & fittings, extra shorter pieces. Very good condition, \$600. Call after 6:00, 525-4436. Ex. 1/31

FURNITURE, HOUSEHOLD & APPLIANCES

SAVE ELECTRICITY- Sturdy clothes drying racks. Free standing, old-fashioned style, though stronger, foldable. Handcrafted by the Cook family. 802-754-8412. Ex. 1/31

ANTIQUES & COLLECTIBLES

MAHOGANY TWIN- bed frame, \$100. 3 sets of red glassware, 28 in all, \$25. Silver-plated tea set, \$25. 12 crystal wine and water glasses, \$25. Plus 2 air conditioners, \$35 for the smaller one and \$50 for the large Westpoint conditioner. Call Debby at 323-6159. Ex. 1/31

SEWING/KNITTING/SPINNING

WANTED- mending to do in my home in Glover. Call Sheila Atherton, 525-3240. Ex. 12/19



Barb's P Jammies + more

CUSTOM SEWING- and alterations. Curtains, specialty clothing, doll clothes, nightgowns & PJs, fleece pants, etc. Zippers for your winter or hunting gear! You have an idea, I can probably make it a reality. Call Barb, 802-525-3557. Barton. Ex. 5/9

REAL ESTATE

2017 REDMAN DOUBLEWIDE- 3 bedroom, 2 bath with fireplace on 12 acres. 1 car garage, to be finished. Between Orleans & Irasburg on Rte. 58. 754-2833. Ex. 2/28

RENTAL PROPERTIES



NEWPORT APARTMENTS FOR RENT- Large, beautiful, secure and newly renovated. Very nice 1 and 2 bedroom units available. Heat included! Highlands of Newport. 802-487-4401. Ex. 1/31

FOR RENT- Small 1-2 bedroom house in Albany Village. Security & first month's rent due in advance. \$500/month. 802-755-6265. Ex. 1/31

2 BEDROOM UNIT- in Derby on paved road on second floor. Heat, hot water, attached garage stall. Deposit, lease. No pets, please. \$675 monthly, available now. 802-766-8833. Ex. 2/7

FOR RENT- Beautiful, 1,000 sq. ft., one bedroom apartment on Lake Memphremagog. Includes everything: heat, electric, cable, internet, plowing, garbage removal. \$950 per month. View pix on Craigslist. Call 673-9909. Ex. 2/28

ORLEANS- newly renovated, large 2 bedroom apartment. Includes heat, rubbish removal, utilities. Dishwasher, washer/dryer hookup. Nonsmoking, no pets, good references, deposit. \$875. 334-2889. Ex. 2/14

FARM EQUIPMENT/MATERIALS

300 GALLON- milk tank, complete. Organic feed: round bales 4x56", first & second. Third cut grass, second crop in bag. 802-334-6426. Ex. 2/14

WANTED

WOODLOTS WANTED- large or small lots for clean, selective cutting. Hardwood, softwood, cedar. One man, one small machine only! Let your land pay the taxes. 525-6659 or 673-3451. Ex. 2/14

HELP WANTED

HOUSEKEEPER WANTED- to clean my home once a week. Must be reliable and pay attention to details. Call between 3:00-6:00, Monday-Friday. 802-487-9211. Ex. 2/21

CARPENTERS WANTED- We are looking for a crew of individuals with at least 1 to 2 years experience. Competitive wages. Please contact Nate at 802-624-0229. Start time immediately! Ex. 2/7

PETS

POPE MEMORIAL- Frontier Animal Shelter has lots of wonderful cats, kittens, dogs & puppies ready for adoption. Adoption fee includes shots, worming, spay/neuter, complete vet health check & leukemia testing. 754-2228, www.frontieranimalsociety.com.

ADOPT A PUG- Go to www.gmpr.org or call 626-8280 for information. Find us on Facebook: Green Mtn. Pug Rescue.

the Chronicle Classifieds

DEADLINE IS MONDAY AT 12 NOON

\$3 for each classified listing, 25 words or less, \$3 to add a photo.

AND, FOR NO EXTRA CHARGE, ALL PREPAID CLASSIFIEDS ARE ALSO LISTED ON OUR WEBSITE!

CIRCLE THE CATEGORY:

Alternative Health/Healing, Antiques & Collectibles, Automotive Equipment, Builders, Building Materials, Business Opportunities, Camping, Clothing, Craft Shows & Bazaars, Drywall & Painting, Electronics, Farm Equipment, Financial Services, Firewood/Pellets, Furniture & Household, Hay/Sawdust/Feed, Health & Beauty, Heavy Equipment, Help Wanted, Home Maintenance & Repair, Horses & Livestock, Knitting & Spinning, Land for Sale, Lawn & Landscape, Lodging & Vacation Rentals, Lost & Found*, Maple Products, Miscellaneous, Music, Motorcycles/Boats/RVs, Pets, Plumbers, Plowing, Pools & Spas, Produce & Nursery, Real Estate, Real Estate or Rental Wanted, Rental Properties, Snowmobiles, Services, Specialty Shops, Sporting Goods, Storage, Tools & Equipment, Vacation & Travel, Vehicles, Wanted, Wood Products, Yard & Moving Sales.

Ad text (25 words or less): _____

Your name, address & phone (required): _____

- No photo
 - Photo enclosed
 - Photo e-mailed
- Photos mailed will not be returned. Photos can be e-mailed

Payment for ad, \$3 x _____ week(s) = \$ _____

Payment for words over 25, 12¢ ea. x _____ week(s) = \$ _____

Payment for photo, \$3 x _____ week(s) = \$ _____

Total enclosed \$ _____

Prepayment is required, non refundable. *Found ads are listed free of charge.

Please mail this form with your payment to:

the Chronicle, P.O. Box 660, Barton, VT 05822

FIREWOOD/PELLETS

R&T FIREWOOD- custom cut and split GREEN firewood. 14" \$225, 16"-24" \$200. Loads are stacked for guaranteed cord accuracy. 525-1087 or 673-5854. Ex. 4/11

FOR SALE- good, quality hardwood firewood. Cut, split, & delivered for \$185 per cord. \$160 blocks. 754-2359, 323-9254. Ex. 1/31

LOST & FOUND

LOST: KEY RING- on January 27 in the vicinity of Derby Store, McDonald's, Price Chopper. Approx. 12 keys on ring. \$15 reward when I receive them. 802-766-8833. Ex. 1/31

HAY/SAWDUST/FEED

500 FIRST CUT- round bales, \$30 each. 802-755-6208. Ex. 2/14

PET PORTRAITS by Brienne Nichols. Abstract or faux painting styles. \$40-\$65. Great gift idea! www.colorfulpets.net or www.facebook.com/briannespportraits, or e-mail colorfulpets@outlook.com. >

Buyers Beware...it is never a good idea to send money orders or to wire money to unknown sources that ask for deposits or prepayment for pets or any other products sight unseen.

Go Solar With Solartech



- Established, local, small business
- High-quality work
- Excellent customer service
- Design, installation, and support from start to finish with our skilled, friendly crew
- Grid-tie and off-grid systems



Visit Our Website for More Information: www.solartechvt.com

754 Station Rd, Sutton, VT 05867 • 802-467-3500 • info@solartechvt.com

Daigle, Sarault awarded Masons scholarships



Sierra Daigle of Troy is the recipient of a Masonic Union Lodge #16 college scholarship. Shown here, Past Master Todd Morey presents this to Ms. Daigle who attends Husson College in Bangor, Maine. While in high school she participated in the health sciences program at the North Country Career Center (NCCC) directed by Celine Champine. She found her passion in the field of nursing and also won first place in the interview and portfolio competition at NCCC. She holds down a job at college while maintaining a 3.75 grade-point average. In her spare time at home, she works two jobs as a waitress and in a local store. She is a former field hockey and ice hockey player at North Country Union High School who was a member of the girls ice hockey state championship team three years ago. The Masons are pleased to support such a motivated and ambitious young lady. Ms. Daigle is the daughter of Jean and Rose Daigle of Troy. Photo courtesy of Tess Round



Evan Sarault is shown here receiving a scholarship from Past Master Todd Morey of Masonic Union Lodge #16 of Troy. Mr. Sarault is a first year student at Lyndon State College (LSC) maintaining a 3.43 grade-point average. He is a former standout of the North Country Union High School football program and now participates in rugby at LSC. In his spare time he works for a local sugar maker assisting him in preparing his woods for the upcoming maple season. This hardworking and self-assured young man is the son of Nathan Sarault and Anne Quirion of Troy. Photo courtesy of Tess Round

School news

Kelsea Cutting named to president's list at Husson

Kelsea M. Cutting of Newport Center has been named to the president's list at Husson University in Bangor, Maine, for the fall 2017 semester. Ms. Cutting is a senior who is pursuing a bachelor's degree in criminal justice and psychology with a mental health rehabilitation technician/community (MHRT/C) certification in the school's counter terrorism and security program.

Students who make the president's list must earn a grade-point average of between 3.80 to 4.0. — from Husson University.

Husson University dean's list

The following students have been named to the fall 2017 dean's list at Husson University in Bangor, Maine:

Meira Charlee Buck of Derby is a sophomore who is currently pursuing a bachelor's degree in

healthcare studies and a master's degree in occupational therapy;

Ashley S. Fauteux of Island Pond is a junior who is currently pursuing a bachelor's degree in health sciences;

Hunter Brittany Cota of Orleans is a first-year student who is currently enrolled in Husson's accounting and master of business administration program; and

Sierra Marie Daigle of Troy is a first-year student who is currently pursuing a bachelor's degree in Husson's nursing program.

Students who make the dean's list must earn a grade-point average of between 3.60 to 3.79 during the period. — from Husson University.

UVM announces fall dean's list

The following students have been named to the dean's list for the fall 2017 semester at the University of Vermont (UVM) in Burlington:

Kerriane Little of Montgomery Center, Kestrel Owens of Craftsbury Common, Janey Masi of Lowell, Mariah Gentley of Newport, Alex Giroux of Newport, Kayla Poginy of Orleans, Nathaniel Launer of Greensboro, Maxwell Reagle of North Troy, and Phoenix Alix of Jay.

To be named to the dean's list, students must have a grade-point average of 3.0 or better and rank in the top 20 percent of their class in their respective college or school. — from UVM.

St. Michael's College dean's list

The following students have been named to the dean's list at St. Michael's College in Colchester for the fall 2017 semester:

Avery G. Marcotte, the son of Micheline Marcotte of Barton, and a graduate of Lake Region Union High School (LRUHS);

Anna M. Strong, the daughter of Robert and Barbara Strong of Craftsbury Common, and a graduate of Craftsbury Academy;

Jade E. Jarvis, the daughter of Tracy and Jennifer Jarvis of Derby, and a graduate of LRUHS;

Colin D. Myrick, the son of Dennis and Andrea Myrick of Derby, and a graduate of North Country Union High School;

Kathrine A. Neal, the daughter of Terence and Heather Neal of Glover, and a graduate of LRUHS; and

Katelynn M. Briere, the daughter of Scott and Carole Briere of Newport, and a graduate of NCUHS. — from St. Michael's College.

CDL Class A Course Offered in Orleans

The Precision Driver Training School is accepting applications for classes that start March 5th. Tuition: \$4,900. Financial assistance available for women, farmworkers, and low-income individuals. Call 802-754-2842, or visit the website at: www.vtdrivered.com.

GOODRIDGE LUMBER INC.

White Cedar Log Homes & Log Siding

Rough & Finished White Cedar Lumber

- Decking • T+V Groove • Shiplap
- Square Edge

Perma-Chink Products for Log Homes

Bailey-Hazen Road • Route 14
Albany, Vermont
802-755-6298
Superior Cedar Products & Services Since 1974.

www.goodridgelumber.com

Advertise in the Chronicle

THE WEEKLY JOURNAL OF ORLEANS COUNTY TWO SECTIONS, 52 PAGES
VOLUME 45, NUMBER 14 APRIL 8, 2015 ONE DOLLAR

Advertising works. Let us help!

If you'd like to advertise in **the Chronicle** but you're unsure how to go about it, please contact a sales rep today! They will come to YOU and help you create an effective ad.

Kija, 802-673-4331, kdetoma@hotmail.com
Canada, Charleston, Derby, Derby Line, Island Pond, Morgan, Newport, Westmore, and Northeast Orleans County.

Zack, 802-673-8947, zack@bartonchronicle.com
Albany, Barton, Brownington, Coventry, Craftsbury, Evansville, Burke, Glover, Greensboro, Hardwick, Irasburg, Jay, Littleton NH, Lyndonville, Morrisville, Newport Center, North Troy, Orleans, St. Johnsbury, Troy, and Westfield.

Website advertising:
If you'd like to advertise on our website, please call or e-mail our office.

Main Office, (802) 525-3531, ads@bartonchronicle.com
133 Water St., P.O. Box 660, Barton, VT 05822
www.bartonchronicle.com